



TECHNICAL DATA SHEETS

socageworld.com





headquarters

[a]
SPEED
automatic stabilisation

by
SOCAGE

EVERYTHING YOU

BOOM MADE WITH HIGHT STRENGHT STEEL PROFILES

High quality and robust boom with a low weight that allows excellent performance

METAL PROTECTION CARTER

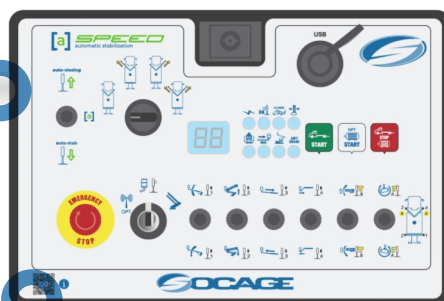
Improves protection and reduces maintenance costs

CATAPHORESIS TREATMENT

it increases the duration of the equipment and it protects against corrosion

BASKET EMERGENCY BYPASS BUTTON

it alllows the emergency descent of the operator



QR CODE ON THE CONTROL PANELS

QR code to be scanned to view the socage academy video



+ SECURITY

+ OPERATOR ASSISTANCE

+ PRODUCTIVITY

NEED AS STANDARD

AUTOMATIC CLOSING

"HOME" button for the automatic closing of the machine

QR CODE ON THE CONTROL PANELS

QR code to be scanned to view the socage academy video

AUTOMATIC STABILIZATION

with just one click, you can safely, easily and quickly obtain an Ok stabilisation to work

SOCAGE SECURITY SYSTEM (UNINTENTIONAL MANOEUVRE CONSENT BUTTON)

it avoids movements involuntary by the operator



SOCAGE CONNECT

portal for remote connection with Socage platforms . It facilitates the diagnostic configuration, planning and update of the platform



RECOVERY SYSTEM

remote control of emergency descent in complete safety and without removing the seal of safety systems

SSW (SOCAGE SAFE WORKPLACE) SAFETY LIGHTS

basket and protruding parts and retraction lights under the basket

MULTIFUNCTION HYDRAULIC SYSTEM

it allows precise movements

FIXED VERTICAL OUTRIGGERS WITH OVERTRAVEL

stabilisation in gauge with greater capacity to overcome differences in height. They also facilitate the use of support plates without ruining the surface

NON SLIPPER OUTRIGGER BASE

it avoids the slipping of the outriggers on slopes

ACTIVITY

+ INNOVATION

+ SIMPLICITY OF USE

Socage

Increase your productivity
Your height solution



SPIDERS
15 - 21 m



PICK-UP
14 - 16 m



VAN
12 - 15 m



< 3.500 kg
14 - 28 m



> 3.500 kg
28 - 100 m

 **SPEED**
AUTOMATIC STABILIZATION

 **HYBRID**
SUSTAINABLE TECHNOLOGY

 **CUSTOM**
MAXIMUM CUSTOMIZATION

aerial work platforms
**wide range of
height solutions**

INDEX

RAPTOR

8



15 - 35 m



ForSte 15S



ForSte 18S



ForSte 21S



ForSte 24S



ForSte 35S

AERIAL PLATFORM PICK UP

13



14 - 16 m



ForSte 14A



ForSte 16A

VAN WITH BOOM LIFT

16



12 - 15 m



ForSte 12VT



ForSte 12VT Tronquet



ForSte 15VTJ

ARTICULATED AERIAL PLATFORMS <3,5 TN

22



14 - 27 m



ForSte 14A Speed



ForSte 16A Speed



ForSte 19A Speed



ForSte 20D Speed



ForSte 21DJ Speed



ForSte 24D Speed



ForSte 27D Speed

TELESCOPIC AERIAL PLATFORMS <3,5 TN

30



14 - 23 m



ForSte 14T Speed



ForSte 15T Speed



ForSte 18T Speed



ForSte 20T Speed



ForSte 20TJ Speed



ForSte 23T Speed

ARTICULATED AERIAL PLATFORMS >3,5 TN

38



28 - 37 m



ForSte 28DA Speed



ForSte 32DJ Speed



ForSte 37DJ Speed

TELESCOPIC AERIAL PLATFORMS WITH JIB

43



39 - 100 m



ForSte 39TJJ



ForSte 44TJJ



ForSte 47TJJ



ForSte 54TJJ



ForSte 75TJJ



ForSte 100TJJ



RAPTOR





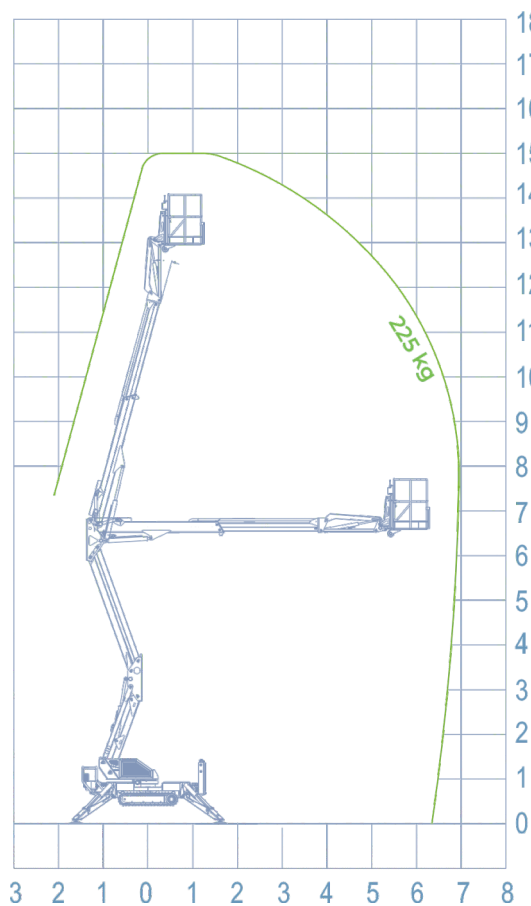
STANDARD ACCESSORIES



DATA SHEET

- White non-marking tracks
- Undercarriage hydraulically expandable
- Electric hour counter
- Engine Honda 13 cv
- Socket 230V in the basket
- Multifunction radio control
- Translation and stabilization hydraulic basket controls
- Outrigger plates

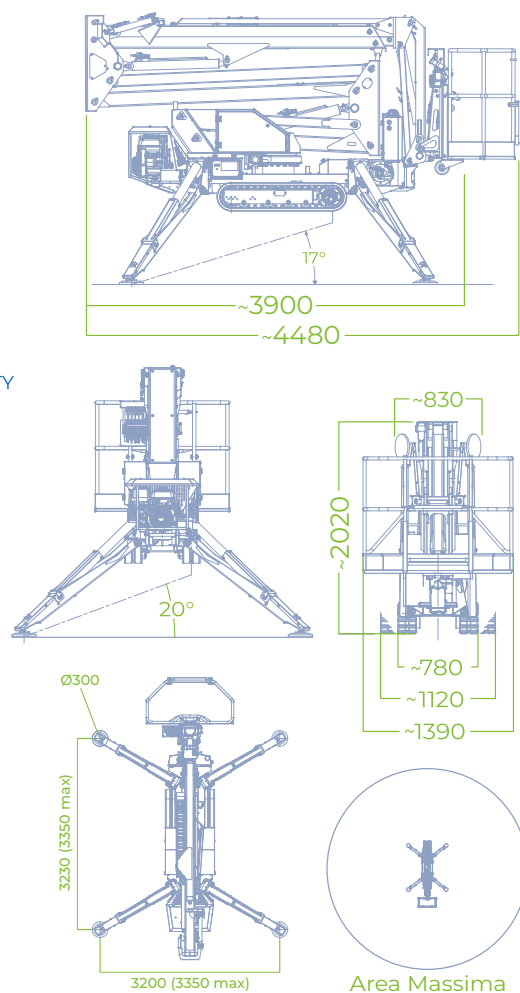
WORKING DIAGRAM



INFO

- OUTRIGGERS**
Z+Z
- WORKING HEIGHT**
15,00 m
- BASKET HEIGHT**
13,00 m
- MAX OUTREACH**
7,00 m
- BASKET LOAD CAPACITY**
225 kg
- BASKET SIZE**
1400 X 700 X 1100 mm
- CONTROLS**
Hydraulic
- TURRET ROTATION**
314°
- GVW**
1,9 ton
- SIZE**
3200 x 3230 mm
- BASKET ROTATION**
0°
- LIFTING HOOK**
-

SIZE





for Ste
185

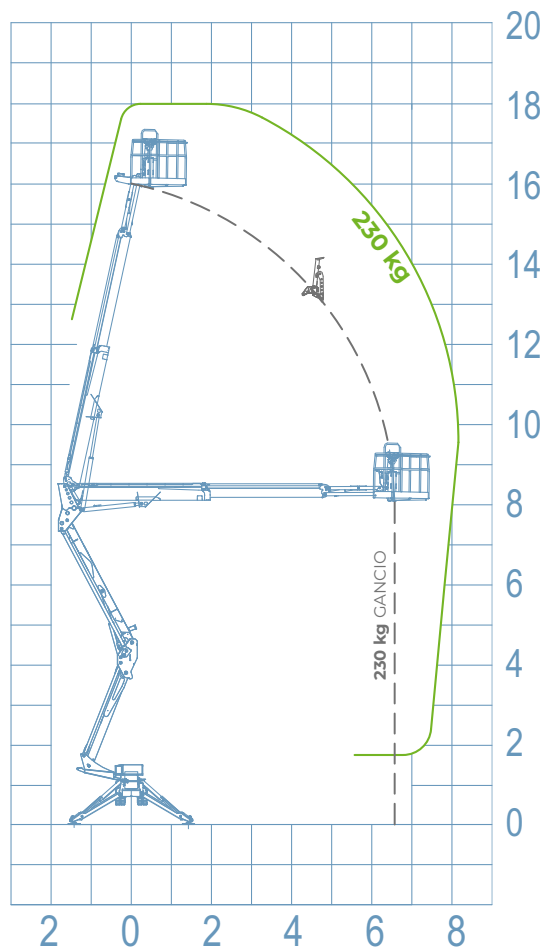
STANDARD ACCESSORIES



DATA SHEET

- Undercarriage hydraulically expandable
- White non marking tracks
- Electric hour-counter
- Manual hand pump
- 230V electric socket in the basket
- Multifunction radio control
- Auxiliary electric pump 230V-50Hz
- Flanged holding valves
- Diesel engine
- Outrigger plates
- **Automatic closing**
- **Automatic stabilization**
- **Removable basket**

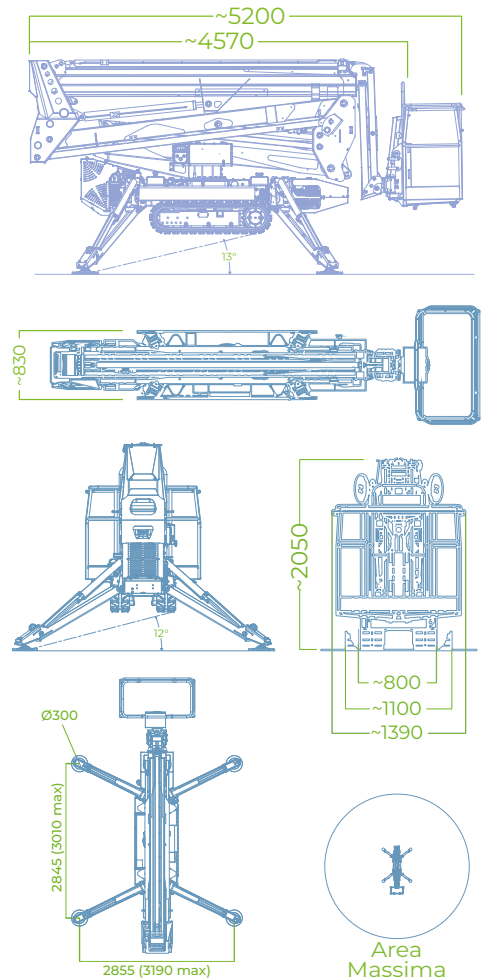
WORKING DIAGRAM



INFO

- OUTRIGGERS**
Z+Z
- WORKING HEIGHT**
18,00 m
- BASKET HEIGHT**
16,00 m
- MAX OUTREACH**
8,20 m
- BASKET LOAD CAPACITY**
230 kg
- BASKET SIZE**
1400 X 700 X 1100 mm
- CONTROLS**
Electro - Hydraulic
- TURRET ROTATION**
380°
- GVW**
2,5 ton
- SIZE**
2845 x 2855 mm
3010 x 3190 mm
- BASKET ROTATION**
60° + 60°
- LIFTING HOOKN**
230 kg

SIZE





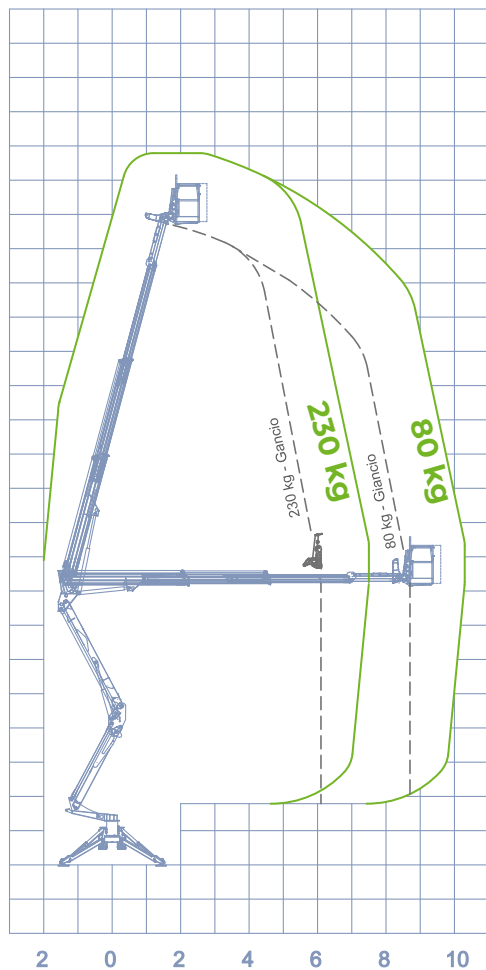
STANDARD ACCESSORIES



DATA SHEET

- Undercarriage hydraulically expandable
- White non marking tracks
- Electric hour-counter
- Manual hand pump
- 230V electric socket in the basket
- Multifunction radio control
- Auxiliary electric pump 230V-50Hz
- Flanged holding valves
- Diesel engine
- Outrigger plates
- **Automatic closing**
- **Automatic stabilization**
- **Removable basket**

WORKING DIAGRAM



INFO



OUTRIGGERS
Z+Z



WORKING HEIGHT
20,80 m



BASKET HEIGHT
18,80 m



MAX OUTREACH
11,30 m



BASKET LOAD CAPACITY
230 kg



BASKET SIZE
1400 X 700 X 1100 mm



CONTROLS
Electro - Hydraulic



TURRET ROTATION
380°



GVW
2,6 ton



SIZE
**2845 x 2855 mm
3010 x 3190 mm**

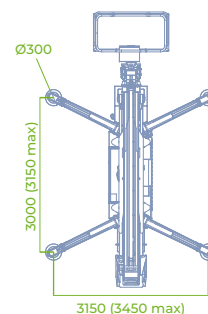
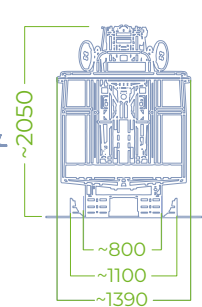
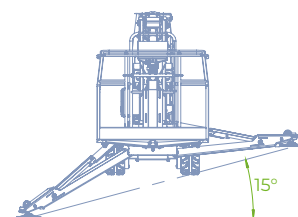
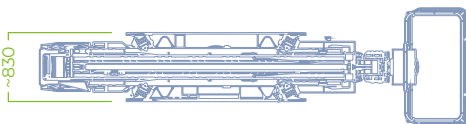
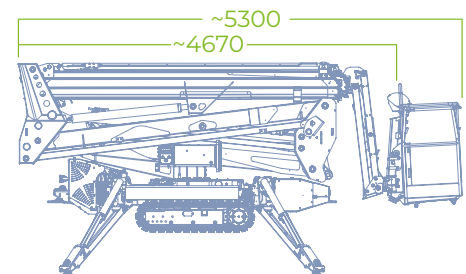


BASKET ROTATION
60° + 60°



LIFTING HOOK
230 kg

SIZE



Area Massima



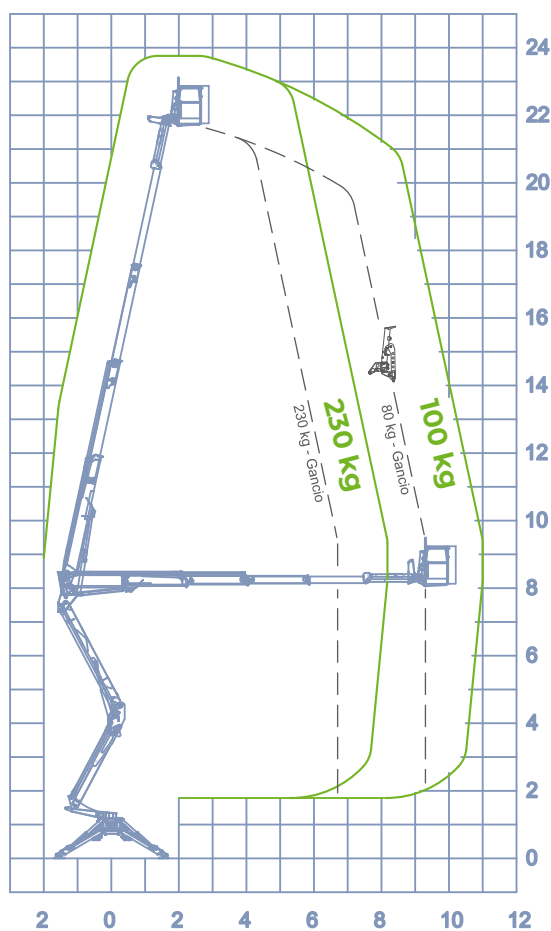
STANDARD ACCESSORIES



DATA SHEET

- Undercarriage hydraulically expandable
- White non marking tracks
- Electric hour-counter
- Manual hand pump
- 230V electric socket in the basket
- Multifunction radio control
- Auxiliary electric pump 230V-50Hz
- Flanged holding valves
- Diesel engine
- Outrigger plates
- **Automatic closing**
- **Automatic stabilization**
- **Removable basket**

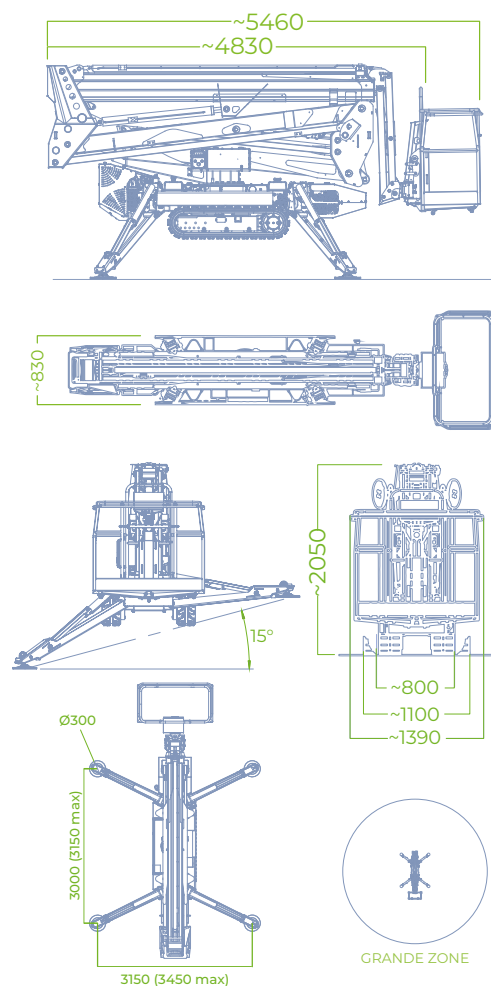
WORKING DIAGRAM



INFO

- OUTRIGGERS**
Z+Z
- WORKING HEIGHT**
23,80 m
- BASKET HEIGHT**
21,80 m
- MAX OUTREACH**
11,00 m
- BASKET LOAD CAPACITY**
230 kg
- BASKET SIZE**
1400 X 700 X 1100 mm
- CONTROLS**
Electro - Hydraulic
- TURRET ROTATION**
380°
- GVW**
2,6 ton
- SIZE**
2845 x 2855 mm
3010 x 3190 mm
- BASKET ROTATION**
60° + 60°
- LIFTING HOOK**
230 kg

SIZE





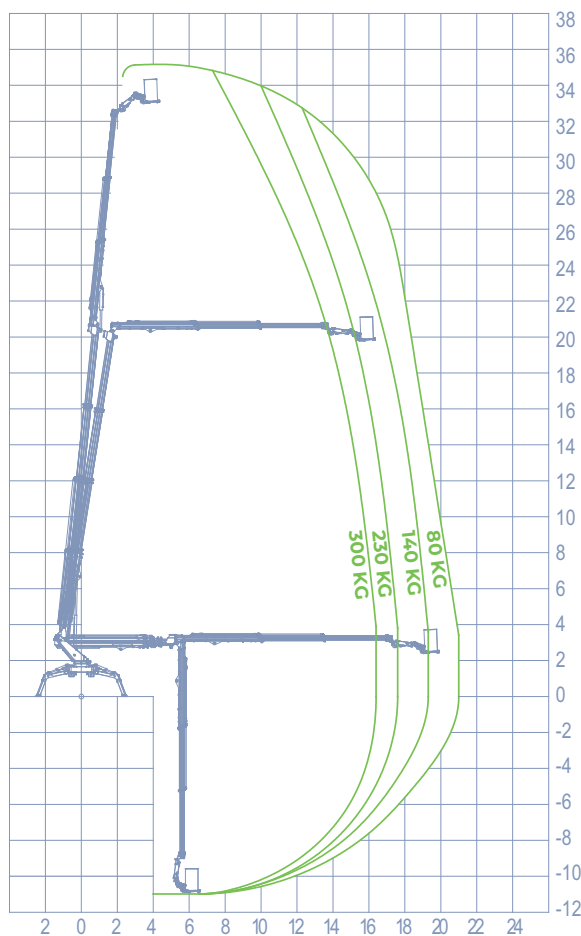
STANDARD ACCESSORIES



DATA SHEET

- Non marking tracks
- Electric hour-counter
- Manual hand pump
- 230V electric socket in the basket
- Multifunction radio control
- Auxiliary electric pump 230V-50Hz
- Flanged holding valves
- Diesel engine
- Possibility of winch
- **Expandable basket**
- **Automatic closing**
- **Automatic stabilization**

WORKING DIAGRAM



INFO



OUTRIGGERS
Z+Z



WORKING HEIGHT
35,00 m



NEGATIVE WORK
-11,00 m



BASKET HEIGHT
33,00 m



MAX OUTREACH
21,00 m



BASKET LOAD CAPACITY
300 kg



BASKET SIZE
1800 X 700 X 1100 mm
1200 X 700 X 1100 mm



CONTROLS
Electro-Hydraulic



TURRET ROTATION
400°



GVW
8,2 ton



SIZE
4750 x 5200 mm
3000 x 6700 mm

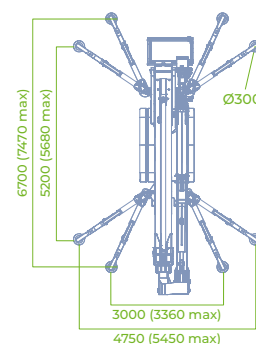
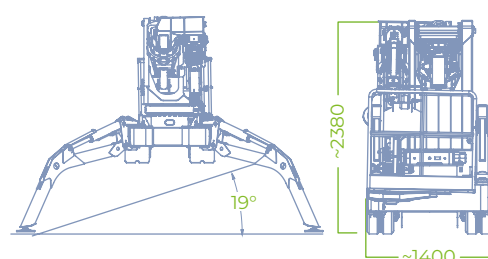
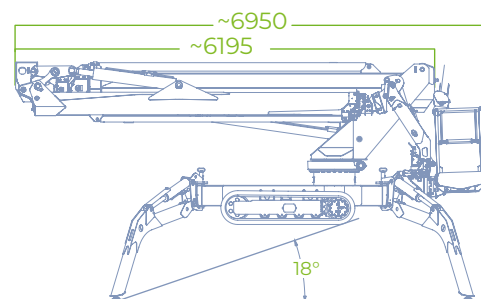


BASKET ROTATION
90° + 90°

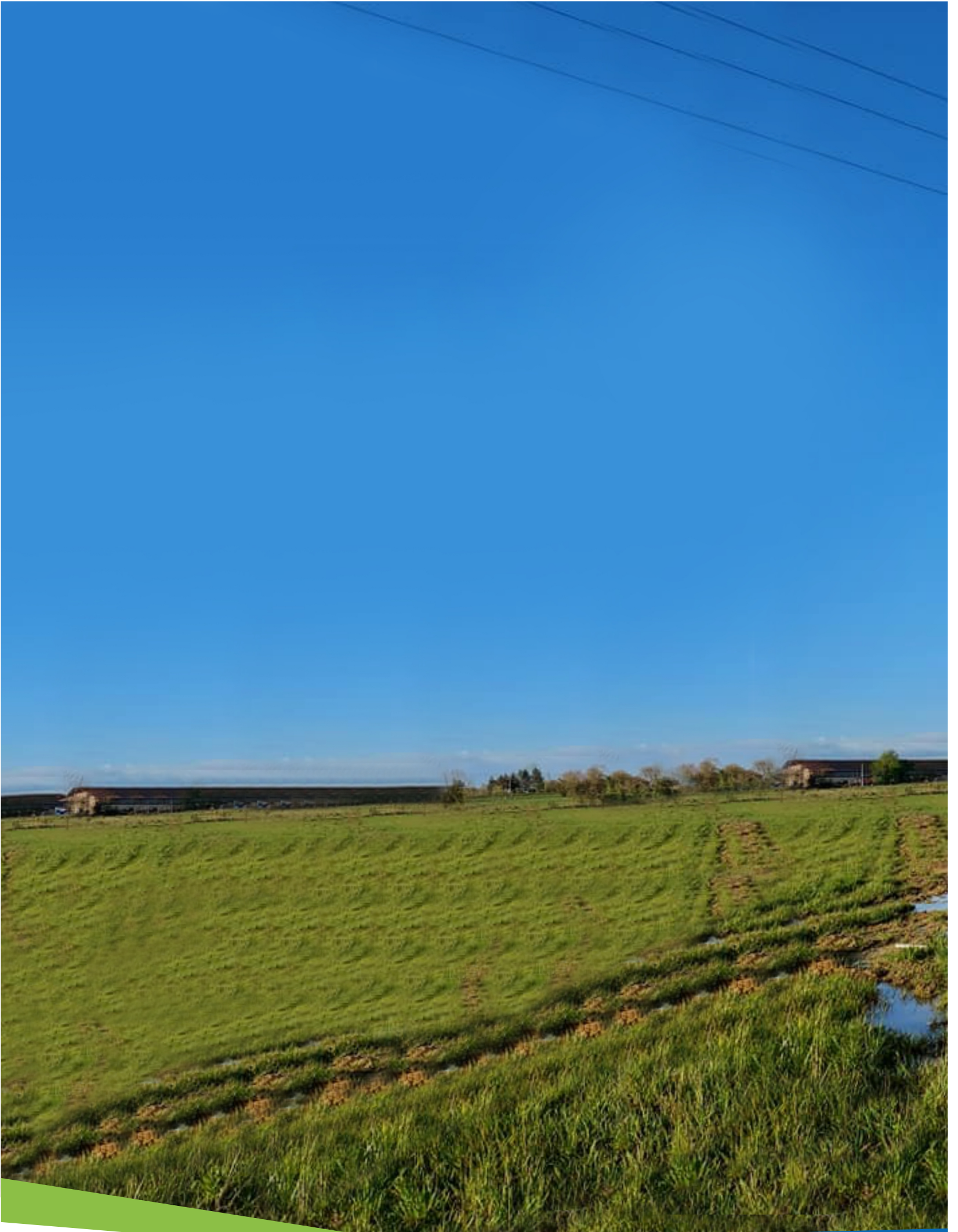


LIFTING HOOK
500 kg

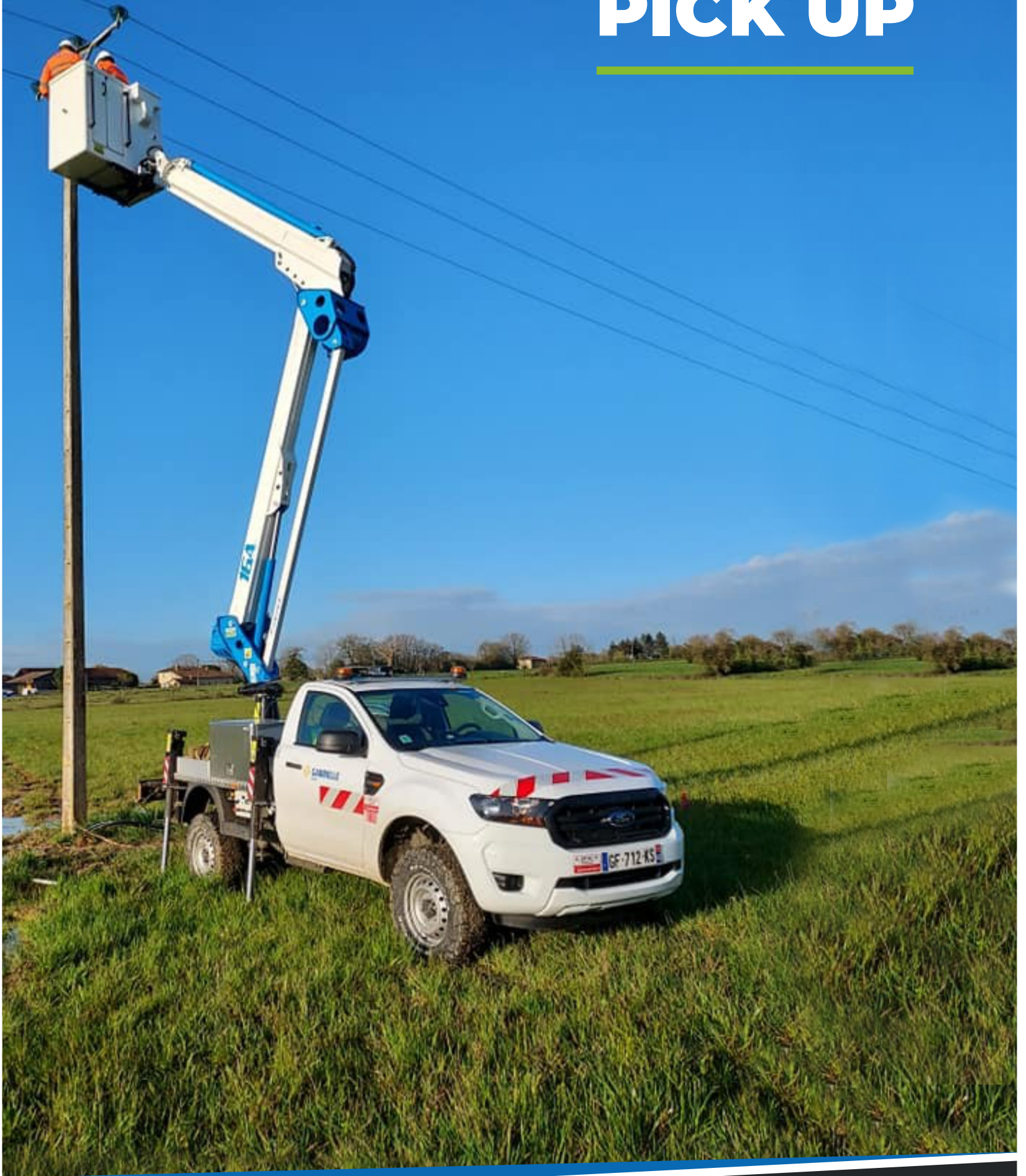
SIZE



Area Massima



PICK UP





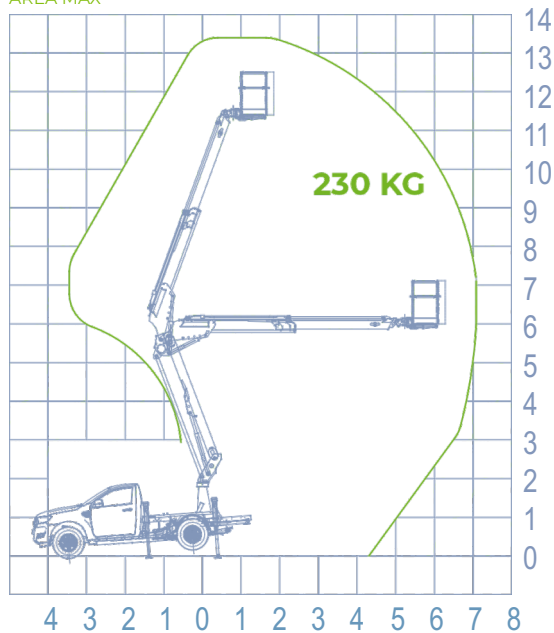
14A
SPEED for Ste
PICK-UP

WORKING DIAGRAM

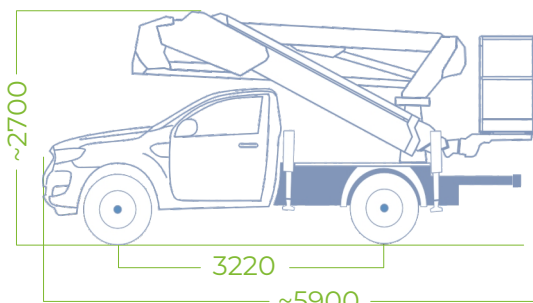
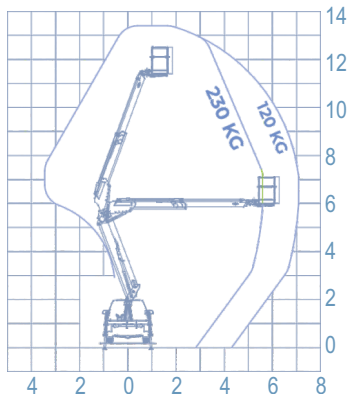
INFO

STANDARD ACCESSORIES

AREA MAX



AREA MIN.



Misure su Ford Ranger



OUTRIGGERS
H+H



WORKING HEIGHT
13,50 m



BASKET HEIGHT
11,50 m



MAX OUTREACH
7,10 m



BASKET LOAD CAPACITY
230 kg



BASKET SIZE
1200x700x1100 mm



BASKET ROTATION
90° + 90°



CONTROLS
Electric



TURRET ROTATION
700°



GVW
3,19 ton



DATA SHEET

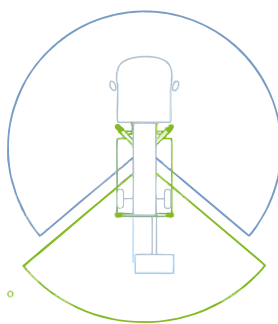
- Cables and hoses installed inside the boom
- Proportional electrohydraulic controls with regulation of the speed of all movements
- Electronic safe system CAN BUS
- 4 outrigger plates
- Socket 230V and 12V in the basket
- Possibility of simultaneous movements
- Automatic regulation of engine revolutions
- Cataphoresis treatment with powder coating
- Aerial part centering light on the basket



SAFETY DATA

- **Socage Security System**
- Unintentional maneuver protection bar
- Controls protection of the basket
- Circuit breaker with differential protection on the 230V line
- Safety bypass for operator rescue
- Moment limiting device with double security
- Self levelling system for the basket
- Inclinator
- Flanged block valves
- Emergency button
- Emergency manual hand pump
- Possibility emergency remote rescue
- Automatic PTO deactivation
- Smart anti crash cab protection
- Electrical hour counter
- Cab light closed outriggers
- Maintenance light (service)

MINIMUM
AREA



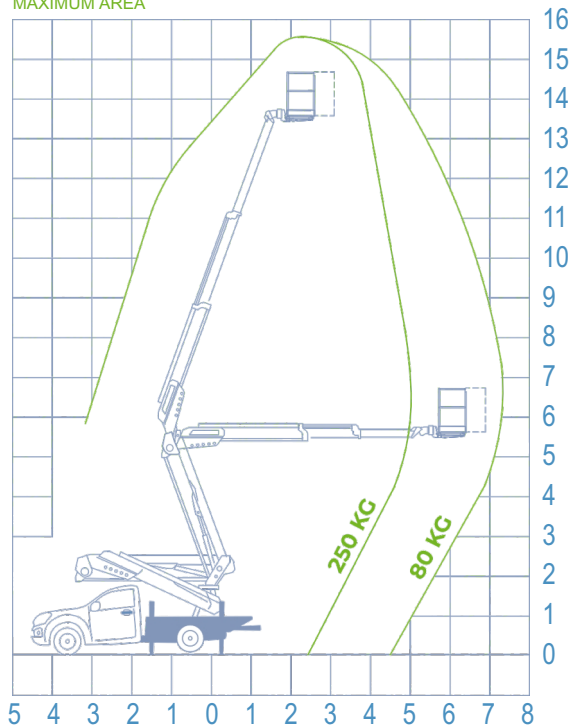
MAXIMUM
AREA













16A
SPEED for Ste
PICK-UP

WORKING DIAGRAM

MAXIMUM AREA



INFO

-  **OUTRIGGERS**
H+H
-  **WORKING HEIGHT**
15,50 m
-  **BASKET HEIGHT**
13,50 m
-  **MAX OUTREACH**
7,30 m
-  **BASKET LOAD CAPACITY**
250 kg
-  **BASKET SIZE**
1200x700x1100 mm
-  **BASKET ROTATION**
90° + 90°
-  **CONTROLS**
Electric
-  **TURRET ROTATION**
700°
-  **GVW**
3,19 ton

STANDARD ACCESSORIES

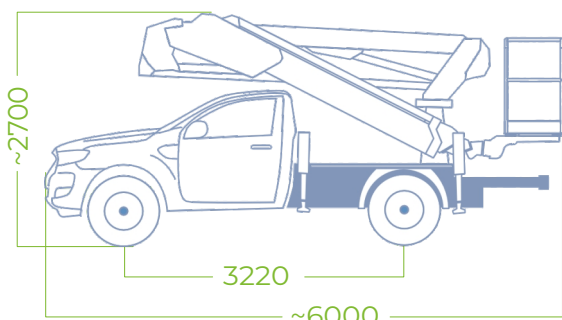
DATA SHEET

- Cables and hoses installed inside the boom
- Proportional electrohydraulic controls with regulation of the speed of all movements
- Electronic safe system CAN BUS
- 4 outrigger plates
- Socket 230V and 12V in the basket
- Possibility of simultaneous movements
- Automatic regulation of engine revolutions
- Cataphoresis treatment with powder coating
- Aerial part centering light on the basket

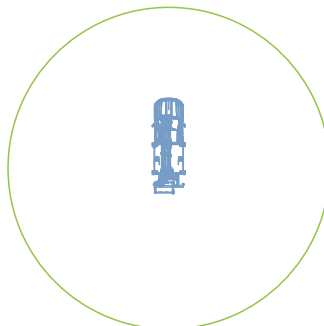
SAFETY DATA

- **Socage Security System**
- Unintentional maneuver protection bar
- Controls protection of the basket
- Circuit braker with differential protection on the 230V line
- Safety bypass for operator rescue
- Moment limiting device with double security
- Self levelling system for the basket
- Inclinator
- Flanged block valves
- Emergency button
- Emergency manual hand pump
- Possibility emergency remote rescue
- Automatic PTO deactivation
- Smart anti crash cab protection
- Electrical hour counter
- Cab light closed outriggers
- Maintenance light (service)

MAXIMUM AREA



Misure su Ford Ranger





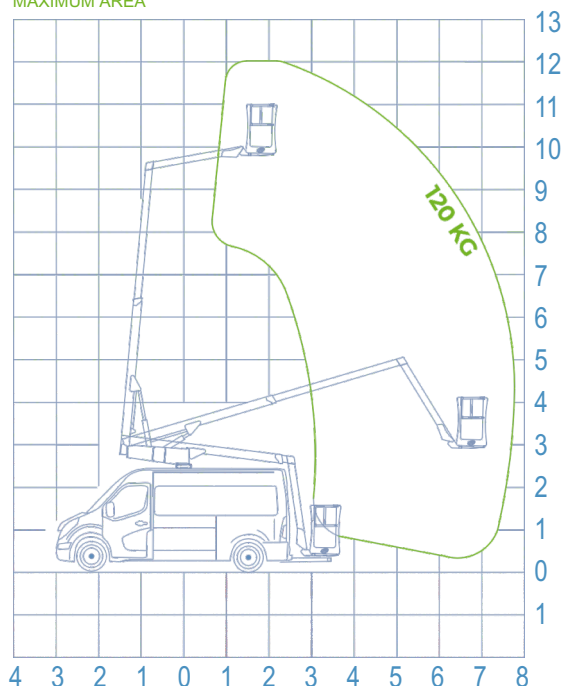
VAN





WORKING DIAGRAM

MAXIMUM AREA



OUTRIGGERS

-



WORKING HEIGHT
12,00 m



BASKET HEIGHT
10,00 m



MAX OUTREACH
7,80 m



BASKET LOAD CAPACITY
120 kg



BASKET SIZE
700x700x1100 mm



BASKET ROTATION
0°



CONTROLS
Electric



TURRET ROTATION
400°



GVW
3,5 ton



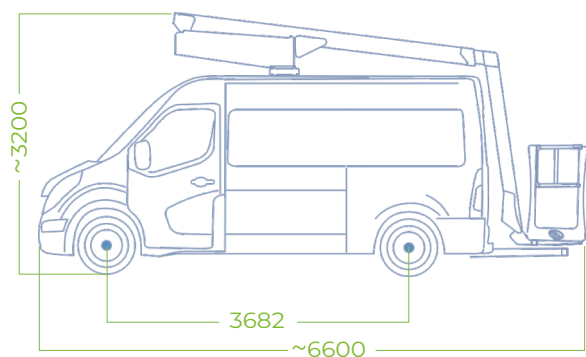
DATA SHEET

- Cables and hoses installed inside the boom
- Fixed jib
- Single-seater basket in fiberglass with total opening
- Proportional electro-hydraulic controls with speed regulation of all movements
- Possibility of simultaneous movements
- Engine start/stop from the basket
- 230V and 12V socket in the basket
- CAN BUS electronic management system
- Cataphoresis treatment



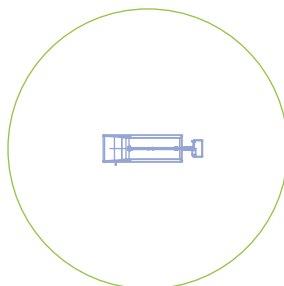
SAFETY DATA

- Unintentional maneuver protection bar
- Circuit breaker with differential protection on the 230V line
- Automatic levelling of the basket
- Inclinator
- Flanged block valves
- Emergency button
- Emergency manual hand pump
- Electrical hour counter
- Digital hour-counter
- 12V emergency electric pump
- Automatic PTO disengagement



Renault Master

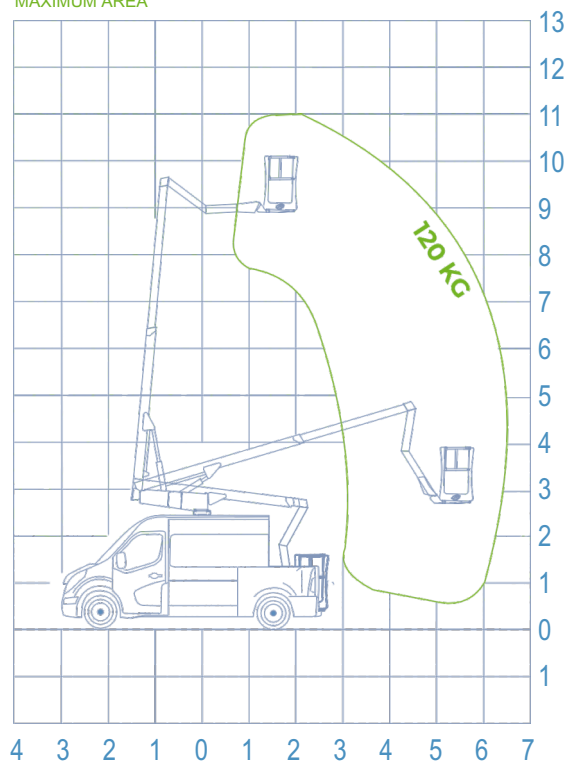
MAXIMUM
AREA





WORKING DIAGRAM

MAXIMUM AREA



OUTRIGGERS

-



WORKING HEIGHT
11,00 m



BASKET HEIGHT
9,00 m



MAX OUTREACH
6,50 m



BASKET LOAD CAPACITY
120 kg



BASKET SIZE
700x700x1100 mm



BASKET ROTATION
0°



CONTROLS
Electric



TURRET ROTATION
400°



GVW
3,5 ton



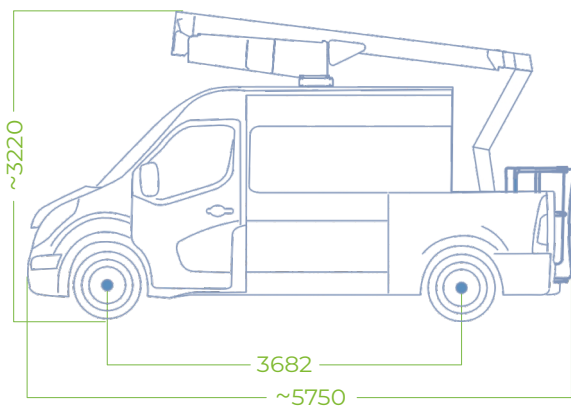
DATA SHEET

- Cables and hoses installed inside the boom
- Fixed jib
- Single-seater basket in fiberglass with total opening
- Proportional electro-hydraulic controls with speed regulation of all movements
- Possibility of simultaneous movements
- Engine start/stop from the basket
- 230V and 12V socket in the basket
- CAN BUS electronic management system
- Cataphoresis treatment



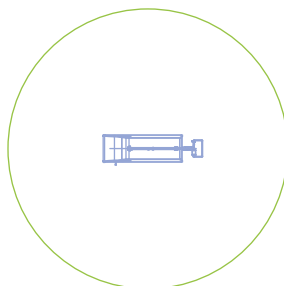
SAFETY DATA

- Unintentional maneuver protection bar
- Circuit breaker with differential protection on the 230V line
- Automatic levelling of the basket
- Inclinator
- Flanged block valves
- Emergency button
- Emergency manual hand pump
- Electrical hour counter
- Digital hour-counter
- 12V emergency electric pump
- Automatic PTO disengagement



Renault Master

MAXIMUM
AREA

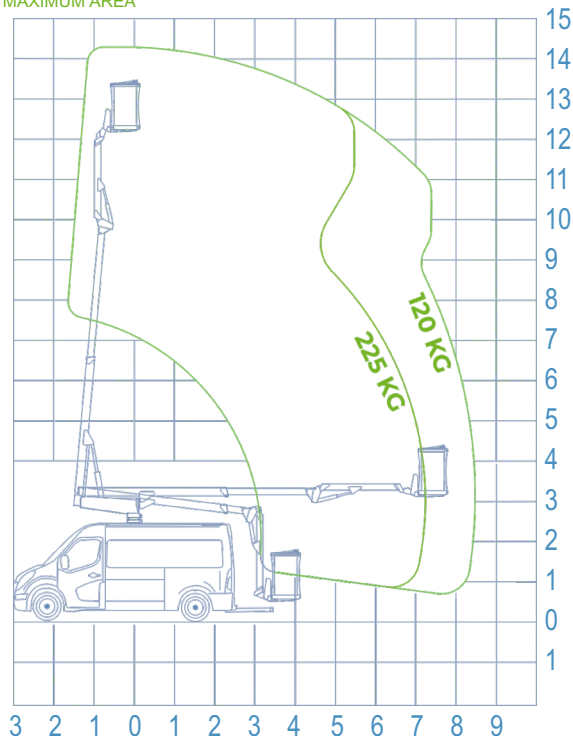




15VTJ
forSte

WORKING DIAGRAM

MAXIMUM AREA



OUTRIGGERS
A



WORKING HEIGHT
14,40 m



BASKET HEIGHT
12,40 m



MAX OUTREACH
8,50 m



BASKET LOAD CAPACITY
225 kg



BASKET SIZE
1400x700x1100 mm



BASKET ROTATION
0°



CONTROLS
Electric



TURRET ROTATION
400°



GVW
3,5 ton



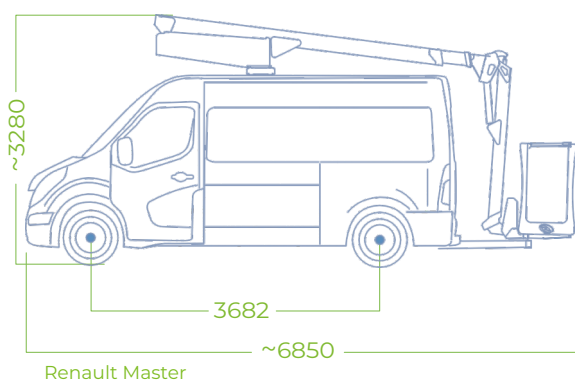
DATA SHEET

- Cables and hoses installed inside the boom
- Articulated jib
- Proportional electro-hydraulic controls with speed regulation of all movements
- Stabilization controls from the basket and from the ground
- Possibility of simultaneous movements
- Engine start/stop from the basket
- 230V and 12V socket in the basket
- CAN BUS electronic management system
- Cataphoresis treatment

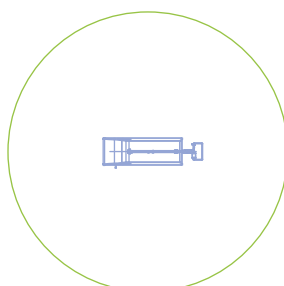


SAFETY DATA

- Unintentional maneuver protection bar
- Circuit breaker with differential protection on the 230V line
- Automatic levelling of the basket
- Inclinator
- Flanged block valves
- Emergency button
- Emergency manual hand pump
- Electrical hour counter
- 12V emergency electric pump
- Digital hour-counter
- Automatic PTO disengagement



MAXIMUM
AREA



Automatic stab
with just
one click

SOCAGE



[a]
SPEED
automatic stabilization

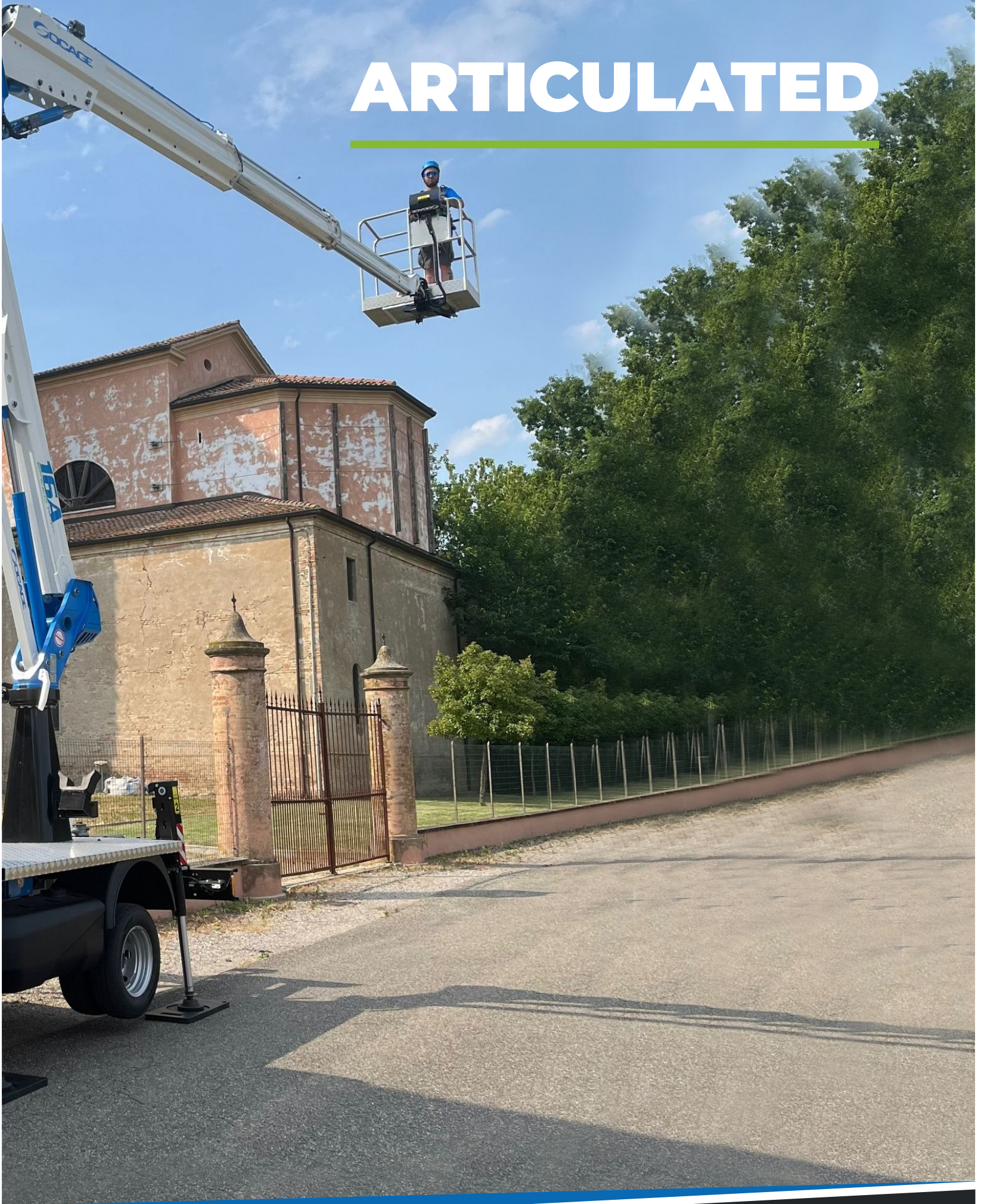


Automatic
stabilization **as standard**





ARTICULATED



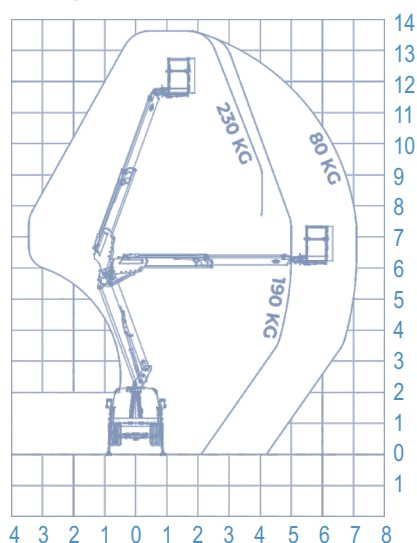


14A

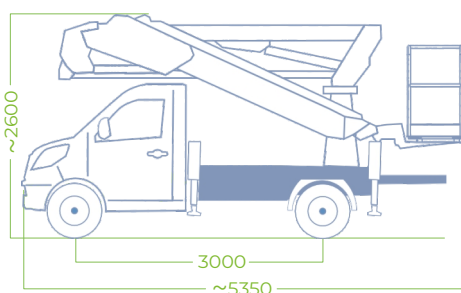
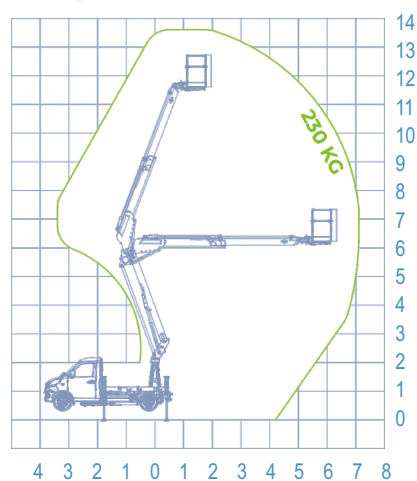
SPEED for S_{te}

WORKING DIAGRAM

MINIMUM AREA



MAXIMUM AREA



INFO



OUTRIGGERS
H+H



WORKING HEIGHT
13,60 m



BASKET HEIGHT
11,60 m



MAX OUTREACH
7,10 m



BASKET LOAD CAPACITY
230 kg



BASKET SIZE
1200x700x1100 mm



BASKET ROTATION
90° + 90°



CONTROLS
Electric

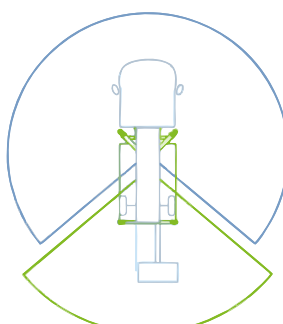


TURRET ROTATION
700°



GVW
2,8 ton

MINIMUM AREA



MAXIMUM AREA

STANDARD ACCESSORIES

[a] AUTOMATIC STABILIZATION

The **SPEED** function is a new solution present in Socage's Aerial Working Platforms on Chassis. It brings great advantages including increasing safety and facilitating the correct use of the necessary stabilization maneuver to start working. With a single button, even from the basket, it allows to obtain stabilization in a safe, simple and fast way, quickly overcoming the irregularities of the ground.

DATA SHEET

- Cables and hoses installed inside the boom
- **SPEED automatic closing**
- **SPEED automatic stabilization from the basket and from the ground**
- Proportional electro-hydraulic controls with regulation of the speed of all movements
- Electronic safe system CAN BUS
- 4 outrigger plates
- Socket 230V and 12V in the basket
- Possibility of simultaneous movements
- Automatic regulation of engine revolutions
- Cataphoresis treatment with powder coating
- Aerial part centering light on the basket
- **Basket front support**

SAFETY DATA

- **Socage Security System**
- Unintentional maneuver protection bar
- Controls protection of the basket
- Circuit breaker with differential protection on the 230V line
- Safety bypass for operator rescue
- Moment limiting device with double security
- Self levelling system for the basket
- Inclinator
- Flanged block valves
- Emergency button
- Emergency manual hand pump
- Possibility emergency remote rescue
- Automatic PTO deactivation
- Smart anti crash cab protection
- Digital hour-counter
- Cab light closed outriggers
- Maintenance light (Service)



16A

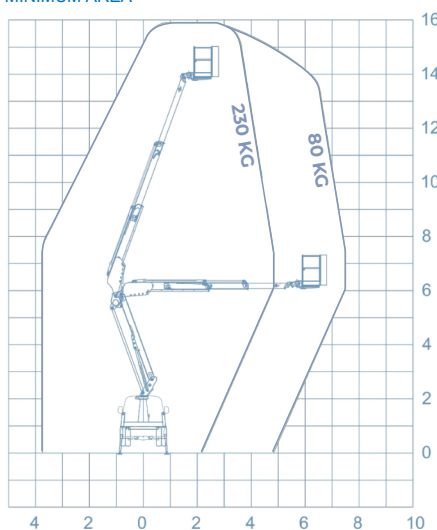
SPEED for Ste

WORKING DIAGRAM

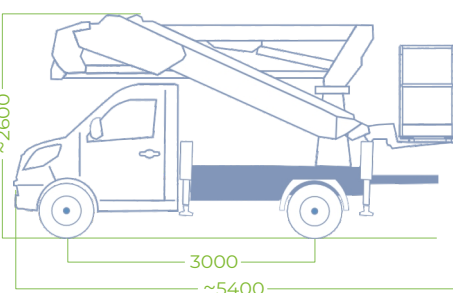
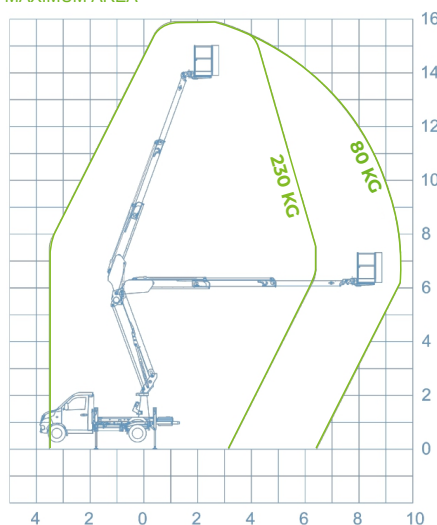
INFO

STANDARD ACCESSORIES

MINIMUM AREA



MAXIMUM AREA



OUTRIGGERS
H+H



WORKING HEIGHT
15,90 m



BASKET HEIGHT
13,90 m



MAX OUTREACH
7,50/9,60 m



BASKET LOAD CAPACITY
230 kg



BASKET SIZE
1200x700x1100 mm



BASKET ROTATION
90° + 90°



CONTROLS
Electric



TURRET ROTATION
700°



GVW
2,8 ton

[a] AUTOMATIC STABILIZATION

The **SPEED** function is a new solution present in Socage's Aerial Working Platforms on Chassis. It brings great advantages including increasing safety and facilitating the correct use of the necessary stabilization maneuver to start working. With a single button, even from the basket, it allows to obtain stabilization in a safe, simple and fast way, quickly overcoming the irregularities of the ground.

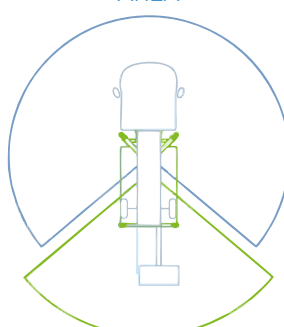
DATA SHEET

- Cables and hoses installed inside the boom
- **SPEED automatic closing**
- **SPEED automatic stabilization from the basket and from the ground**
- Proportional electro-hydraulic controls with regulation of the speed of all movements
- Electronic safe system CAN BUS
- 4 outrigger plates
- Socket 230V and 12V in the basket
- Possibility of simultaneous movements
- Automatic regulation of engine revolutions
- Cataphoresis treatment with powder coating
- Aerial part centering light on the basket
- **Basket front support**

SAFETY DATA

- **Socage Security System**
- Unintentional maneuver protection bar
- Controls protection of the basket
- Circuit breaker with differential protection on the 230V line
- Safety bypass for operator rescue
- Moment limiting device with double security
- Self levelling system for the basket
- Inclinator
- Flanged block valves
- Emergency button
- Emergency manual hand pump
- Possibility emergency remote rescue
- Automatic PTO deactivation
- Smart anti crash cab protection
- Digital hour-counter
- Cab light closed outriggers
- Maintenance light (Service)

MINIMUM AREA



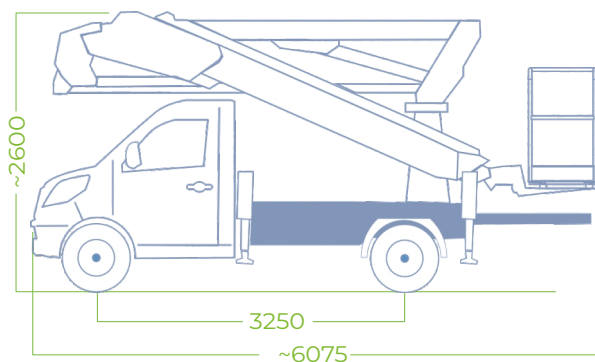
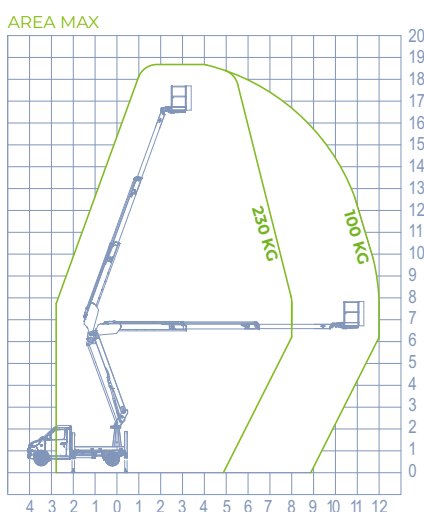
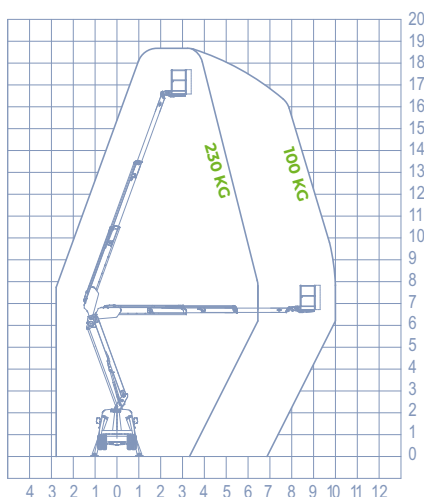
MAXIMUM AREA



19A

SPEED for STE

WORKING DIAGRAM



INFO



OUTRIGGERS
A+A



WORKING HEIGHT
18,70 m



BASKET HEIGHT
16,70 m



MAX OUTREACH
12,00 m



BASKET LOAD CAPACITY
230 kg



BASKET SIZE
1200x700x1100 mm



BASKET ROTATION
90° + 90°



CONTROLS
Electric



TURRET ROTATION
700°



GVW
2,8 ton

STANDARD ACCESSORIES

[a] AUTOMATIC STABILIZATION

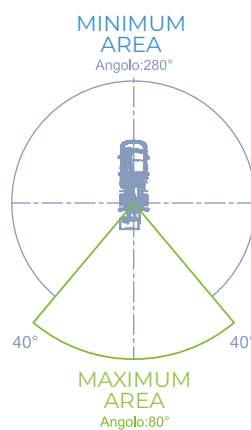
The **SPEED** function is a new solution present in Socage's Aerial Working Platforms on Chassis. It brings great advantages including increasing safety and facilitating the correct use of the necessary stabilization maneuver to start working. With a single button, even from the basket, it allows to obtain stabilization in a safe, simple and fast way, quickly overcoming the irregularities of the ground.

DATA SHEET

- Cables and hoses installed inside the boom
- **SPEED automatic closing**
- **SPEED automatic stabilization from the basket and from the ground**
- Proportional electro-hydraulic controls with regulation of the speed of all movements
- Electronic safe system CAN BUS
- 4 outrigger plates
- Socket 230V and 12V in the basket
- Possibility of simultaneous movements
- Automatic regulation of engine revolutions
- Cataphoresis treatment with powder coating
- Aerial part centering light on the basket
- **Basket front support**

SAFETY DATA

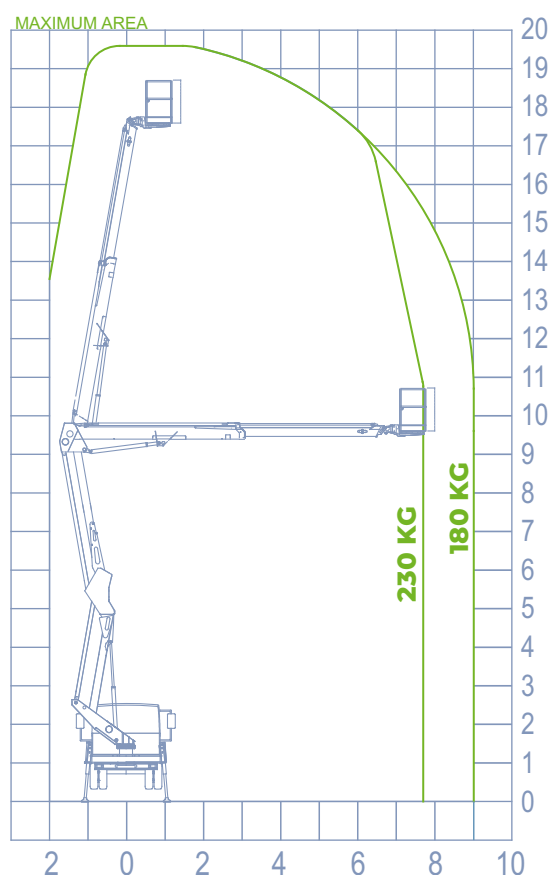
- **Socage Security System**
- Unintentional maneuver protection bar
- Controls protection of the basket
- Circuit breaker with differential protection on the 230V line
- Safety bypass for operator rescue
- Moment limiting device with double security
- Self levelling system for the basket
- Inclinator
- Flanged block valves
- Emergency button
- Emergency manual hand pump
- Possibility emergency remote rescue
- Automatic PTO deactivation
- Smart anti crash cab protection
- Digital hour-counter
- Cab light closed outriggers
- Maintenance light (Service)












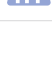


for Ste
20D
SPEED

WORKING DIAGRAM



INFO

	OUTRIGGERS H+H
	WORKING HEIGHT 19,60 m
	BASKET HEIGHT 17,60 m
	MAX OUTREACH 9,00 m
	BASKET LOAD CAPACITY 230 kg
	BASKET SIZE 1400x700x1100 mm
	BASKET ROTATION 90° + 90°
	CONTROLS Electric
	TURRET ROTATION 700°
	GVW 3,5 ton

STANDARD ACCESSORIES

[a] AUTOMATIC STABILIZATION

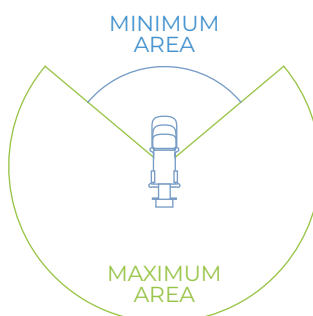
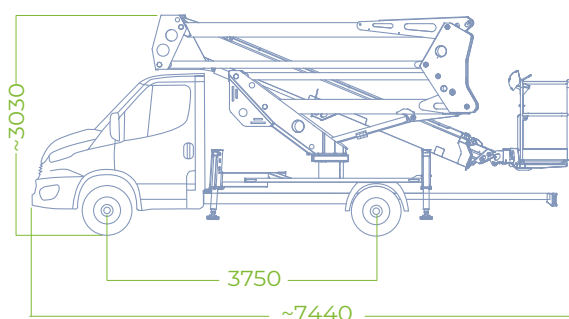
The **SPEED** function is a new solution present in Socage's Aerial Working Platforms on Chassis. It brings great advantages including increasing safety and facilitating the correct use of the necessary stabilization maneuver to start working. With a single button, even from the basket, it allows to obtain stabilization in a safe, simple and fast way, quickly overcoming the irregularities of the ground.

DATA SHEET

- Cables and hoses installed inside the boom
- **SPEED automatic closing**
- **SPEED automatic stabilization from the basket and from the ground**
- Proportional electro-hydraulic controls with regulation of the speed of all movements
- Electronic safe system CAN BUS
- 4 outrigger plates
- Socket 230V and 12V in the basket
- Possibility of simultaneous movements
- Automatic regulation of engine revolutions
- Cataphoresis treatment with powder coating
- Aerial part centering light on the basket
- **Basket front support**

SAFETY DATA

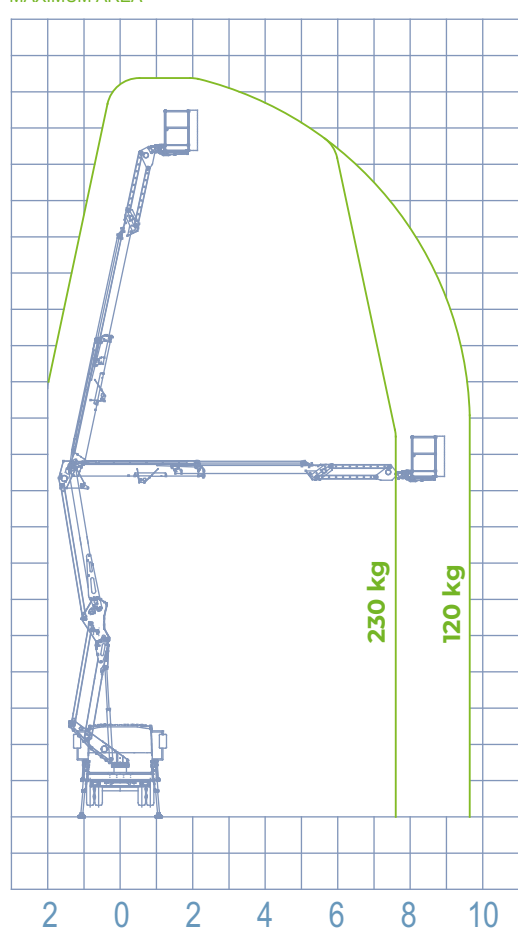
- **Socage Security System**
- Unintentional maneuver protection bar
- Controls protection of the basket
- Circuit breaker with differential protection on the 230V line
- Safety bypass for operator rescue
- Moment limiting device with double security
- Self levelling system for the basket
- Inclinator
- Flanged block valves
- Emergency button
- Emergency manual hand pump
- Possibility emergency remote rescue
- Automatic PTO deactivation
- Smart anti crash cab protection
- Digital hour-counter
- Cab light closed outriggers
- Maintenance light (Service)





WORKING DIAGRAM

MAXIMUM AREA



22
20
18
16
14
12
10
8
6
4
2
0



OUTRIGGERS
H+H



WORKING HEIGHT
20,40 m



BASKET HEIGHT
18,40 m



MAX OUTREACH
9,80 m



BASKET LOAD CAPACITY
230 kg



BASKET SIZE
1400x700x1100 mm



BASKET ROTATION
90° + 90°



CONTROLS
Electric



TURRET ROTATION
700°



GVW
3,5 ton

STANDARD ACCESSORIES

[a] AUTOMATIC STABILIZATION

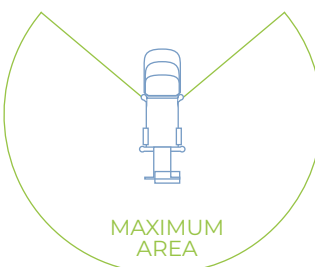
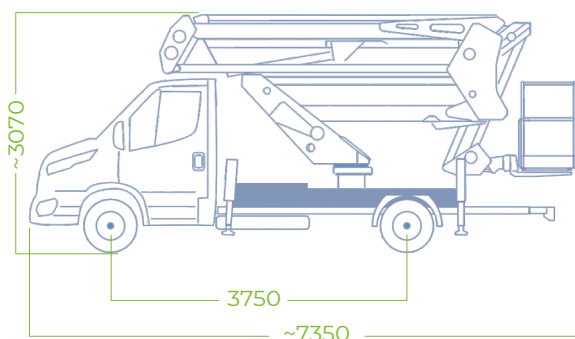
The **SPEED** function is a new solution present in Socage's Aerial Working Platforms on Chassis. It brings great advantages including increasing safety and facilitating the correct use of the necessary stabilization maneuver to start working. With a single button, even from the basket, it allows to obtain stabilization in a safe, simple and fast way, quickly overcoming the irregularities of the ground.

DATA SHEET

- Cables and hoses installed inside the boom
- **SPEED automatic closing**
- **SPEED automatic stabilization from the basket and from the ground**
- Proportional electro-hydraulic controls with regulation of the speed of all movements
- Hydraulic Jib
- Electronic safe system CAN BUS
- 4 outrigger plates
- Socket 230V and 12V in the basket
- Possibility of simultaneous movements
- Automatic regulation of engine revolutions
- Cataphoresis treatment with powder coating
- Aerial part centering light on the basket
- **Basket front support**

SAFETY DATA

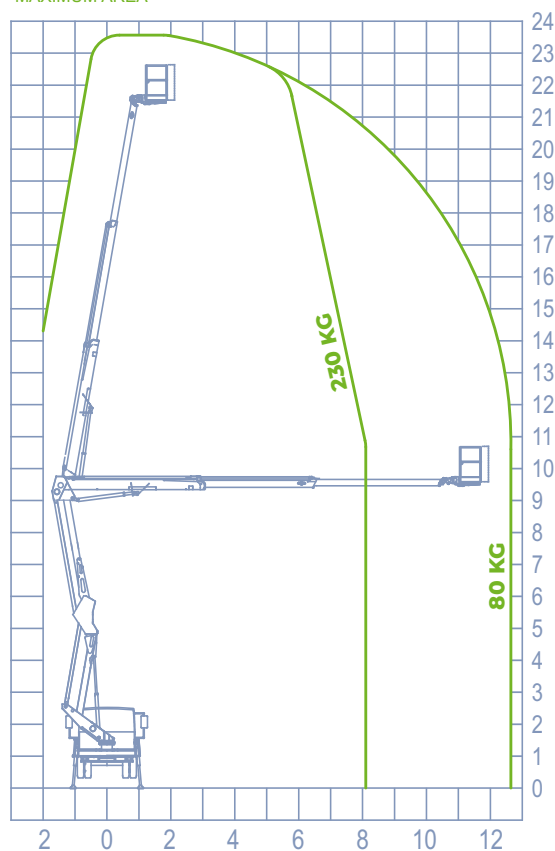
- **Socage Security System**
- Unintentional maneuver protection bar
- Controls protection of the basket
- Circuit breaker with differential protection on the 230V line
- Safety bypass for operator rescue
- Moment limiting device with double security
- Self levelling system for the basket
- Inclinator
- Flanged block valves
- Emergency button
- Emergency manual hand pump
- Possibility emergency remote rescue
- Automatic PTO deactivation
- Smart anti crash cab protection
- Digital hour-counter
- Cab light closed outriggers
- Maintenance light (Service)





WORKING DIAGRAM

MAXIMUM AREA



OUTRIGGERS
H+H



WORKING HEIGHT
23,60 m



BASKET HEIGHT
21,60 m



MAX OUTREACH
12,70 m



BASKET LOAD CAPACITY
230 kg



BASKET SIZE
1400x700x1100 mm



BASKET ROTATION
90° + 90°



CONTROLS
Electric



TURRET ROTATION
700°



GVW
3,5 ton

STANDARD ACCESSORIES

[a] AUTOMATIC STABILIZATION

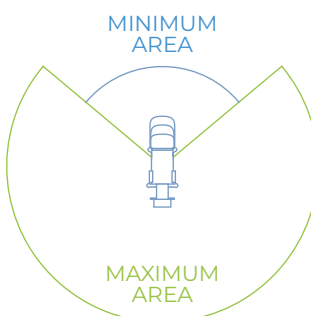
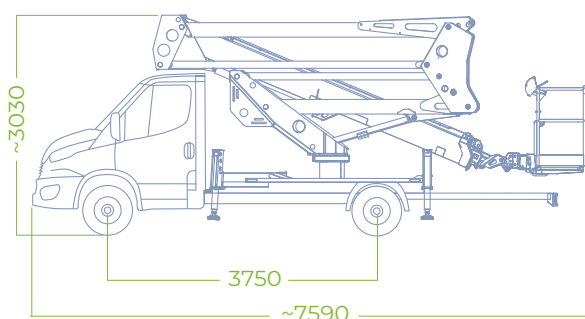
The **SPEED** function is a new solution present in Socage's Aerial Working Platforms on Chassis. It brings great advantages including increasing safety and facilitating the correct use of the necessary stabilization maneuver to start working. With a single button, even from the basket, it allows to obtain stabilization in a safe, simple and fast way, quickly overcoming the irregularities of the ground.

DATA SHEET

- Cables and hoses installed inside the boom
- **SPEED automatic closing**
- **SPEED automatic stabilization from the basket and from the ground**
- Proportional electro-hydraulic controls with regulation of the speed of all movements
- Electronic safe system CAN BUS
- 4 outrigger plates
- Socket 230V and 12V in the basket
- Possibility of simultaneous movements
- Automatic regulation of engine revolutions
- Cataphoresis treatment with powder coating
- Aerial part centering light on the basket
- **Basket front support**

SAFETY DATA

- **Socage Security System**
- Unintentional maneuver protection bar
- Controls protection of the basket
- Circuit breaker with differential protection on the 230V line
- Safety bypass for operator rescue
- Moment limiting device with double security
- Self levelling system for the basket
- Inclinator
- Flanged block valves
- Emergency button
- Emergency manual hand pump
- Possibility emergency remote rescue
- Automatic PTO deactivation
- Smart anti crash cab protection
- Digital hour-counter
- Cab light closed outriggers
- Maintenance light (Service)

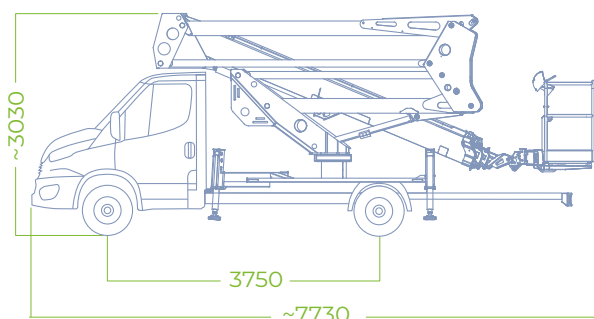
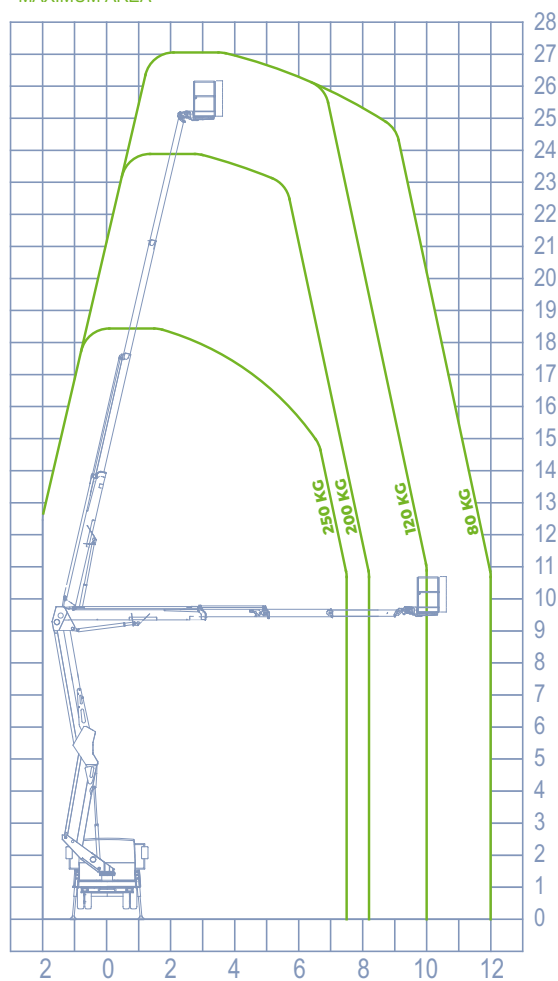






WORKING DIAGRAM

MAXIMUM AREA



INFO

	OUTRIGGERS H+H
	WORKING HEIGHT 27,00 m
	BASKET HEIGHT 25,00 m
	MAX OUTREACH 12,00 m
	BASKET LOAD CAPACITY 250 kg
	BASKET SIZE 1400x700x1100 mm
	BASKET ROTATION 90° + 90°
	CONTROLS Electric
	TURRET ROTATION 700°
	GVW 3,5 ton

STANDARD ACCESSORIES

[a] AUTOMATIC STABILIZATION

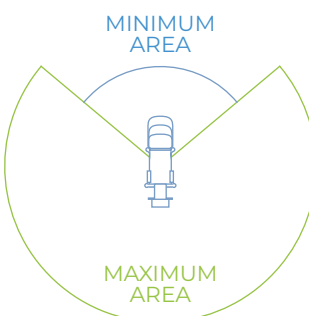
The **SPEED** function is a new solution present in Socage's Aerial Working Platforms on Chassis. It brings great advantages including increasing safety and facilitating the correct use of the necessary stabilization maneuver to start working. With a single button, even from the basket, it allows to obtain stabilization in a safe, simple and fast way, quickly overcoming the irregularities of the ground.

DATA SHEET

- Cables and hoses installed inside the boom
- **SPEED automatic closing**
- **SPEED automatic stabilization from the basket and from the ground**
- Proportional electro-hydraulic controls with regulation of the speed of all movements
- Electronic safe system CAN BUS
- 4 outrigger plates
- Socket 230V and 12V in the basket
- Possibility of simultaneous movements
- Automatic regulation of engine revolutions
- Cataphoresis treatment with powder coating
- Aerial part centering light on the basket
- **Basket front support**

SAFETY DATA

- **Socage Security System**
- Unintentional maneuver protection bar
- Controls protection of the basket
- Circuit breaker with differential protection on the 230V line
- Safety bypass for operator rescue
- Moment limiting device with double security
- Self levelling system for the basket
- Inclinator
- Flanged block valves
- Emergency button
- Emergency manual hand pump
- Possibility emergency remote rescue
- Automatic PTO deactivation
- Smart anti crash cab protection
- Digital hour-counter
- Cab light closed outriggers
- Maintenance light (Service)





TELESCOPIC

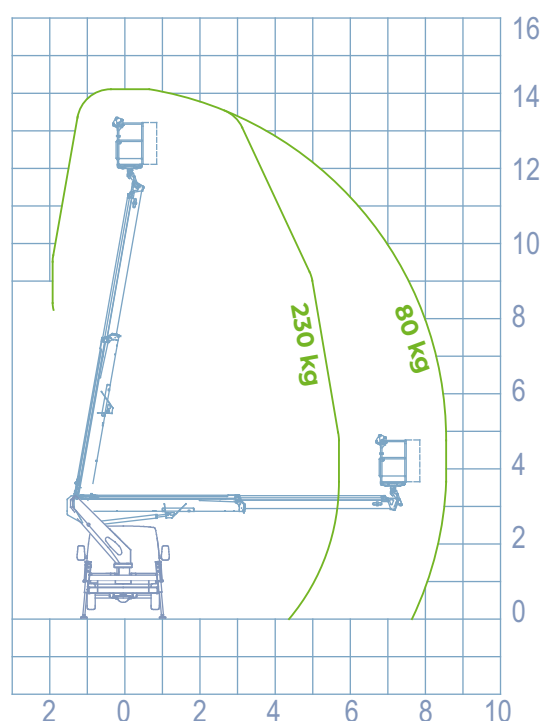




for Stee
14T
SPEED

WORKING DIAGRAM

MAXIMUM AREA



OUTRIGGERS
H+H



WORKING HEIGHT
15,20 m



BASKET HEIGHT
13,20 m



MAX OUTREACH
10,00 m



BASKET LOAD CAPACITY
230 kg



BASKET SIZE
1400x700x1100 mm



BASKET ROTATION
90° + 90°



CONTROLS
Electric



TURRET ROTATION
700°



GVW
3,5 ton

STANDARD ACCESSORIES

[a] AUTOMATIC STABILIZATION

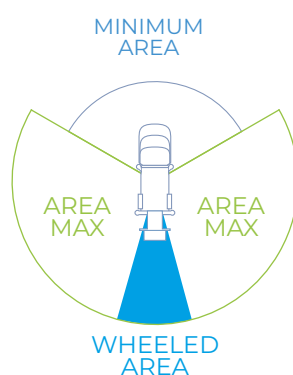
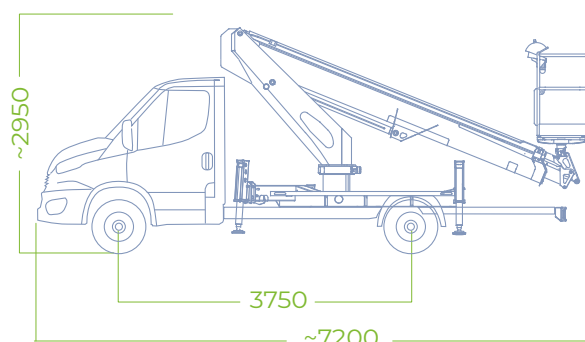
The **SPEED** function is a new solution present in Socage's Aerial Working Platforms on Chassis. It brings great advantages including increasing safety and facilitating the correct use of the necessary stabilization maneuver to start working. With a single button, even from the basket, it allows to obtain stabilization in a safe, simple and fast way, quickly overcoming the irregularities of the ground.

DATA SHEET

- Cables and hoses installed inside the boom
- **SPEED automatic closing**
- **SPEED automatic stabilization from the basket and from the ground**
- Proportional electro-hydraulic controls with regulation of the speed of all movements
- Electronic safe system CAN BUS
- 4 outrigger plates
- Socket 230V and 12V in the basket
- Possibility of simultaneous movements
- Automatic regulation of engine revolutions
- Cataphoresis treatment with powder coating
- Aerial part centering light on the basket

SAFETY DATA

- **Socage Security System**
- Unintentional maneuver protection bar
- Controls protection of the basket
- Circuit breaker with differential protection on the 230V line
- Safety bypass for operator rescue
- Moment limiting device with double security
- Self levelling system for the basket
- Inclinator
- Flanged block valves
- Emergency button
- Emergency manual hand pump
- Possibility emergency remote rescue
- Automatic PTO deactivation
- Smart anti crash cab protection
- Digital hour-counter
- Cab light closed outriggers
- Maintenance light (Service)





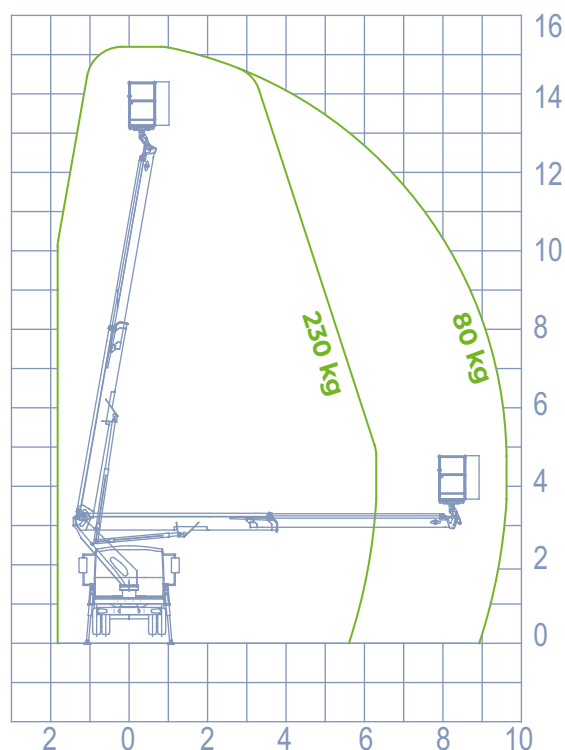
for Site
15T
SPEED

WORKING DIAGRAM

INFO

STANDARD ACCESSORIES

MAXIMUM AREA



OUTRIGGERS
H+H



WORKING HEIGHT
15,20 m



BASKET HEIGHT
13,20 m



MAX OUTREACH
10,00 m



BASKET LOAD CAPACITY
230 kg



BASKET SIZE
1400x700x1100 mm



BASKET ROTATION
90° + 90°



CONTROLS
Electric



TURRET ROTATION
700°



GVW
3,5 ton

[a] AUTOMATIC STABILIZATION

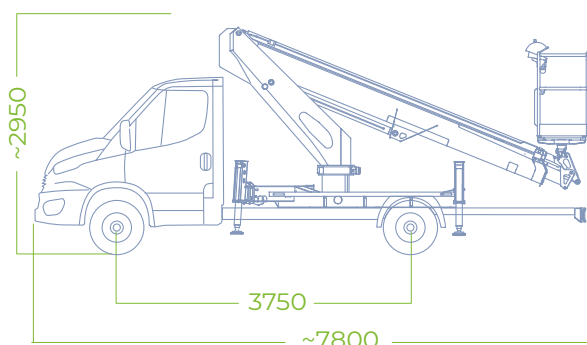
The **SPEED** function is a new solution present in Socage's Aerial Working Platforms on Chassis. It brings great advantages including increasing safety and facilitating the correct use of the necessary stabilization maneuver to start working. With a single button, even from the basket, it allows to obtain stabilization in a safe, simple and fast way, quickly overcoming the irregularities of the ground.

DATA SHEET

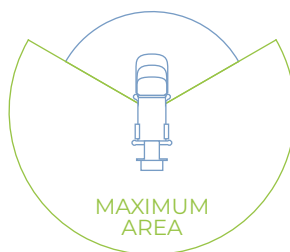
- Cables and hoses installed inside the boom
- **SPEED automatic closing**
- **SPEED automatic stabilization from the basket and from the ground**
- Proportional electro-hydraulic controls with regulation of the speed of all movements
- Electronic safe system CAN BUS
- 4 outrigger plates
- Socket 230V and 12V in the basket
- Possibility of simultaneous movements
- Automatic regulation of engine revolutions
- Cataphoresis treatment with powder coating
- Aerial part centering light on the basket

SAFETY DATA

- **Socage Security System**
- Unintentional maneuver protection bar
- Controls protection of the basket
- Circuit breaker with differential protection on the 230V line
- Safety bypass for operator rescue
- Moment limiting device with double security
- Self levelling system for the basket
- Inclinator
- Flanged block valves
- Emergency button
- Emergency manual hand pump
- Possibility emergency remote rescue
- Automatic PTO deactivation
- Smart anti crash cab protection
- Digital hour-counter
- Cab light closed outriggers
- Maintenance light (Service)



MINIMUM
AREA



MAXIMUM
AREA

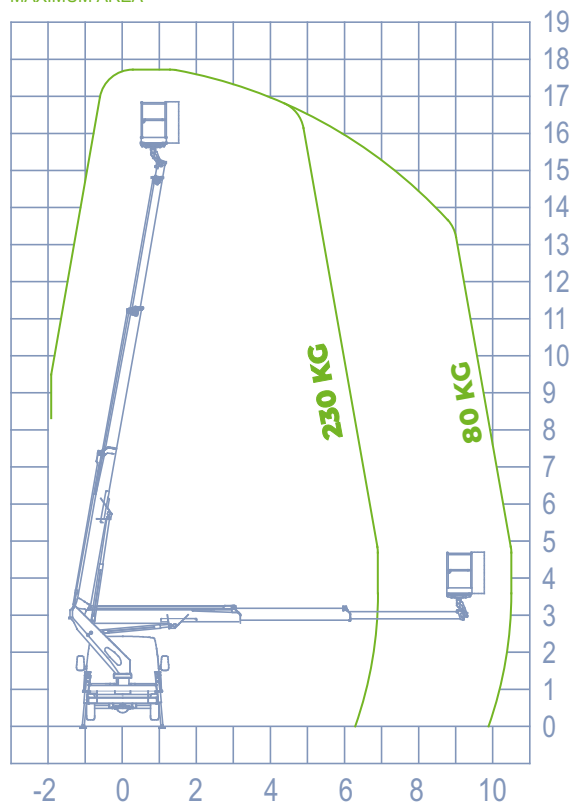














for Ste
18T
SPEED

WORKING DIAGRAM

MAXIMUM AREA



	OUTRIGGERS H+H
	WORKING HEIGHT 17,70 m
	BASKET HEIGHT 15,70 m
	MAX OUTREACH 10,50 m
	BASKET LOAD CAPACITY 230 kg
	BASKET SIZE 1400x700x1100 mm
	BASKET ROTATION 90° + 90°
	CONTROLS Electric
	TURRET ROTATION 700°
	GVW 3,5 ton

INFO

STANDARD ACCESSORIES

[a] AUTOMATIC STABILIZATION

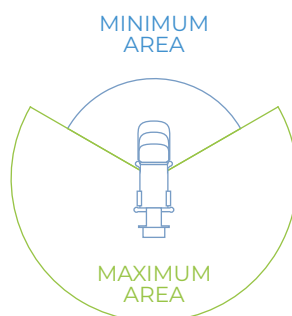
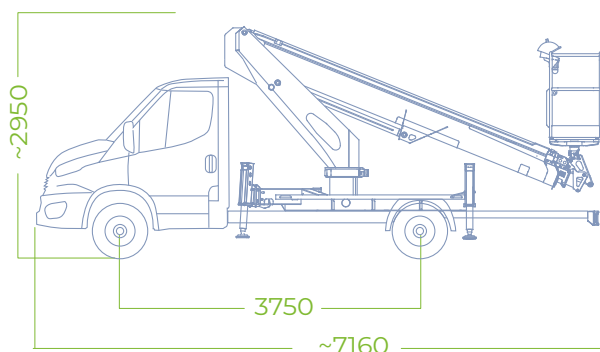
The **SPEED** function is a new solution present in Socage's Aerial Working Platforms on Chassis. It brings great advantages including increasing safety and facilitating the correct use of the necessary stabilization maneuver to start working. With a single button, even from the basket, it allows to obtain stabilization in a safe, simple and fast way, quickly overcoming the irregularities of the ground.

DATA SHEET

- Cables and hoses installed inside the boom
- **SPEED automatic closing**
- **SPEED automatic stabilization from the basket and from the ground**
- Proportional electro-hydraulic controls with regulation of the speed of all movements
- Electronic safe system CAN BUS
- 4 outrigger plates
- Socket 230V and 12V in the basket
- Possibility of simultaneous movements
- Automatic regulation of engine revolutions
- Cataphoresis treatment with powder coating
- Aerial part centering light on the basket

SAFETY DATA

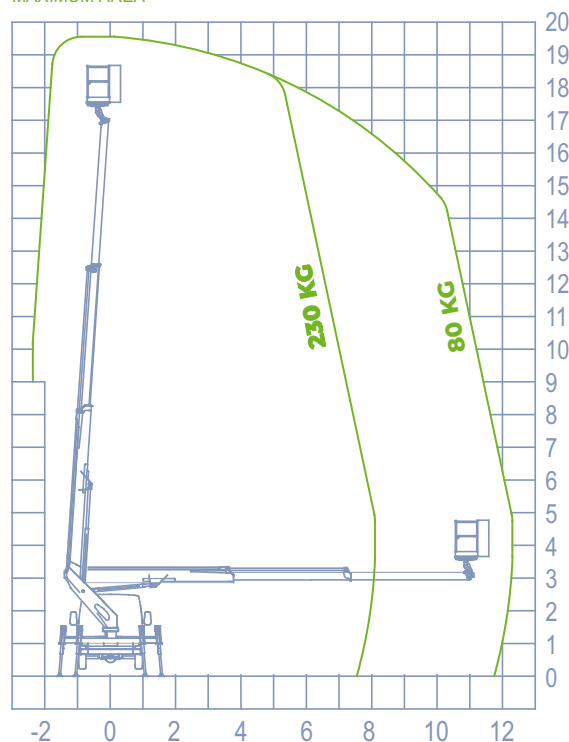
- **Socage Security System**
- Unintentional maneuver protection bar
- Controls protection of the basket
- Circuit breaker with differential protection on the 230V line
- Safety bypass for operator rescue
- Moment limiting device with double security
- Self levelling system for the basket
- Inclinator
- Flanged block valves
- Emergency button
- Emergency manual hand pump
- Possibility emergency remote rescue
- Automatic PTO deactivation
- Smart anti crash cab protection
- Digital hour-counter
- Cab light closed outriggers
- Maintenance light (Service)





WORKING DIAGRAM

MAXIMUM AREA



OUTRIGGERS
HE+H



WORKING HEIGHT
19,60 m



BASKET HEIGHT
17,60 m



MAX OUTREACH
12,30 m



BASKET LOAD CAPACITY
230 kg



BASKET SIZE
1400x700x1100 mm



BASKET ROTATION
90° + 90°



CONTROLS
Electric



TURRET ROTATION
700°



GVW
3,5 ton

STANDARD ACCESSORIES

[a] AUTOMATIC STABILIZATION

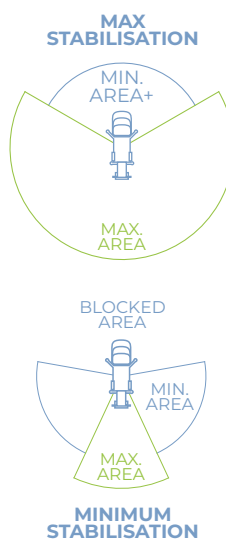
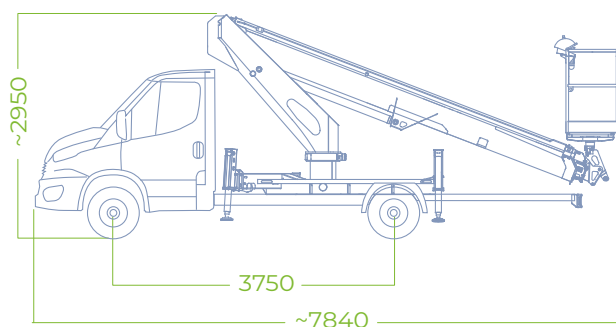
The **SPEED** function is a new solution present in Socage's Aerial Working Platforms on Chassis. It brings great advantages including increasing safety and facilitating the correct use of the necessary stabilization maneuver to start working. With a single button, even from the basket, it allows to obtain stabilization in a safe, simple and fast way, quickly overcoming the irregularities of the ground.

DATA SHEET

- Cables and hoses installed inside the boom
- **SPEED automatic closing**
- **SPEED automatic stabilization from the basket and from the ground**
- Proportional electro-hydraulic controls with regulation of the speed of all movements
- Electronic safe system CAN BUS
- 4 outrigger plates
- Socket 230V and 12V in the basket
- Possibility of simultaneous movements
- Automatic regulation of engine revolutions
- Cataphoresis treatment with powder coating
- Aerial part centering light on the basket

SAFETY DATA

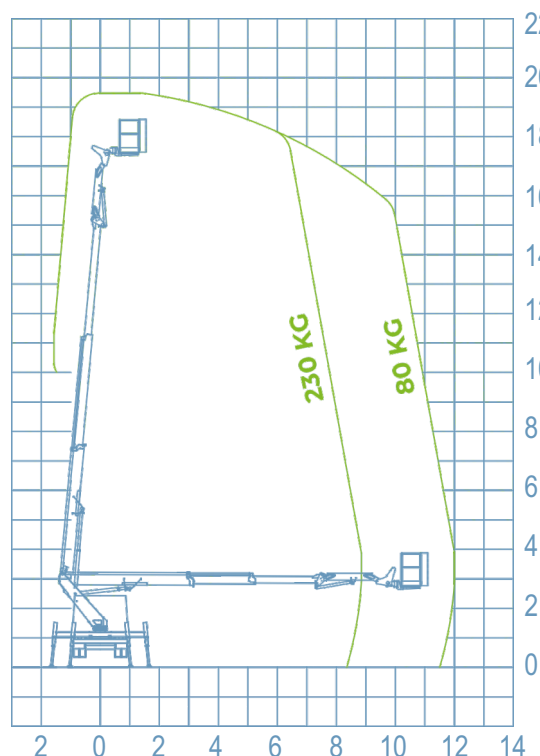
- **Socage Security System**
- Unintentional maneuver protection bar
- Controls protection of the basket
- Circuit breaker with differential protection on the 230V line
- Safety bypass for operator rescue
- Moment limiting device with double security
- Self levelling system for the basket
- Inclinator
- Flanged block valves
- Emergency button
- Emergency manual hand pump
- Possibility emergency remote rescue
- Automatic PTO deactivation
- Smart anti crash cab protection
- Digital hour-counter
- Cab light closed outriggers
- Maintenance light (Service)





WORKING DIAGRAM

MAXIMUM AREA



OUTRIGGERS
HE+H



WORKING HEIGHT
19,70 m



BASKET HEIGHT
17,70 m



MAX OUTREACH
12,00 m



BASKET LOAD CAPACITY
230 kg



BASKET SIZE
1400x700x1100 mm



BASKET ROTATION
90° + 90°



CONTROLS
Electric



TURRET ROTATION
700°



GVW
3,5 ton

STANDARD ACCESSORIES

[a] AUTOMATIC STABILIZATION

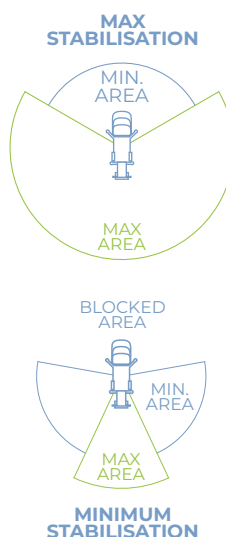
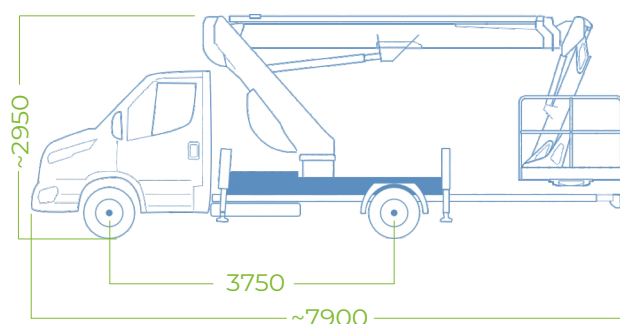
The **SPEED** function is a new solution present in Socage's Aerial Working Platforms on Chassis. It brings great advantages including increasing safety and facilitating the correct use of the necessary stabilization maneuver to start working. With a single button, even from the basket, it allows to obtain stabilization in a safe, simple and fast way, quickly overcoming the irregularities of the ground.

DATA SHEET

- Cables and hoses installed inside the boom
- **SPEED automatic closing**
- **SPEED automatic stabilization from the basket and from the ground**
- Proportional electro-hydraulic controls with regulation of the speed of all movements
- Electronic safe system CAN BUS
- JIB
- 4 outrigger plates
- Socket 230V and 12V in the basket
- Possibility of simultaneous movements
- Automatic regulation of engine revolutions
- Cataphoresis treatment with powder coating
- Aerial part centering light on the basket

SAFETY DATA

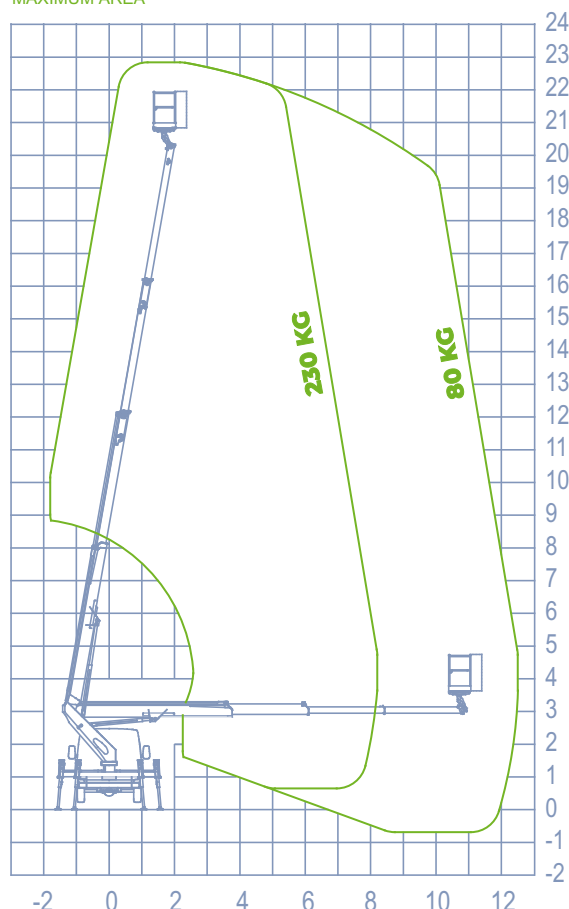
- **Socage Security System**
- Unintentional maneuver protection bar
- Controls protection of the basket
- Circuit breaker with differential protection on the 230V line
- Safety bypass for operator rescue
- Moment limiting device with double security
- Self levelling system for the basket
- Inclinator
- Flanged block valves
- Emergency button
- Emergency manual hand pump
- Possibility emergency remote rescue
- Automatic PTO deactivation
- Smart anti crash cab protection
- Digital hour-counter
- Cab light closed outriggers
- Maintenance light (Service)





WORKING DIAGRAM

MAXIMUM AREA



OUTRIGGERS
HE+H



WORKING HEIGHT
22,80 m



BASKET HEIGHT
20,80 m



MAX OUTREACH
12,50 m



BASKET LOAD CAPACITY
230 kg



BASKET SIZE
1400x700x1100 mm



BASKET ROTATION
90° + 90°



CONTROLS
Electric



TURRET ROTATION
700°



GVW
3,5 ton

STANDARD ACCESSORIES

[a] AUTOMATIC STABILIZATION

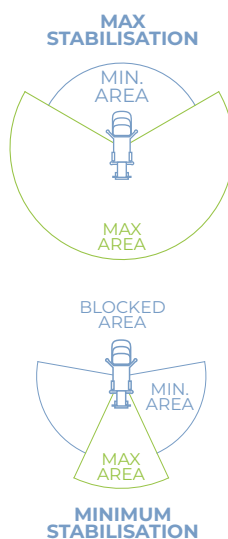
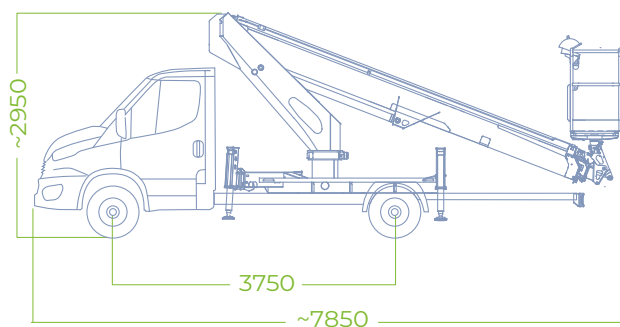
The **SPEED** function is a new solution present in Socage's Aerial Working Platforms on Chassis. It brings great advantages including increasing safety and facilitating the correct use of the necessary stabilization maneuver to start working. With a single button, even from the basket, it allows to obtain stabilization in a safe, simple and fast way, quickly overcoming the irregularities of the ground.

DATA SHEET

- Cables and hoses installed inside the boom
- **SPEED automatic closing**
- **SPEED automatic stabilization from the basket and from the ground**
- Proportional electro-hydraulic controls with regulation of the speed of all movements
- Electronic safe system CAN BUS
- 4 outrigger plates
- Socket 230V and 12V in the basket
- Possibility of simultaneous movements
- Automatic regulation of engine revolutions
- Cataphoresis treatment with powder coating
- Aerial part centering light on the basket

SAFETY DATA

- **Socage Security System**
- Unintentional maneuver protection bar
- Controls protection of the basket
- Circuit breaker with differential protection on the 230V line
- Safety bypass for operator rescue
- Moment limiting device with double security
- Self levelling system for the basket
- Inclinator
- Flanged block valves
- Emergency button
- Emergency manual hand pump
- Possibility emergency remote rescue
- Automatic PTO deactivation
- Smart anti crash cab protection
- Digital hour-counter
- Cab light closed outriggers
- Maintenance light (Service)





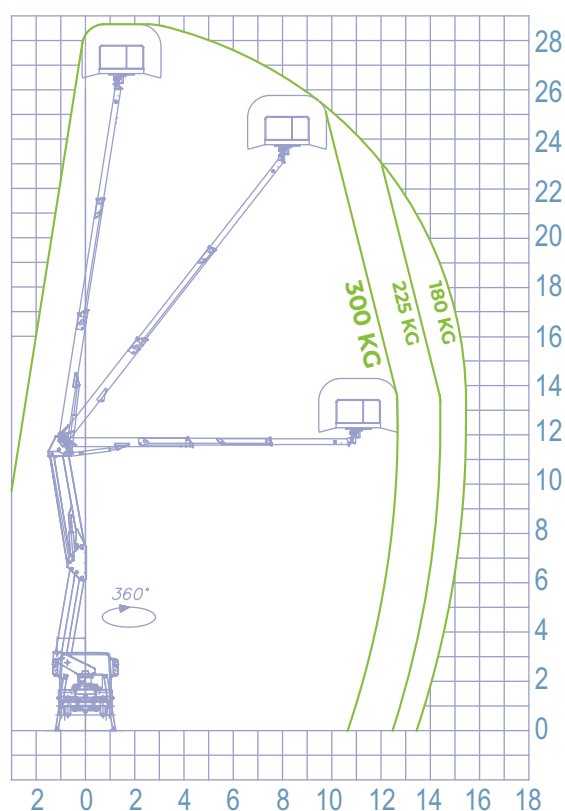
ARTICULATED

>3,5TN





WORKING DIAGRAM



INFO

	OUTRIGGERS H+H
	WORKING HEIGHT 28,50 m
	BASKET HEIGHT 26,50 m
	MAX OUTREACH 16,00 m
	BASKET LOAD CAPACITY 300 kg
	BASKET SIZE 1800x700x1100 mm
	BASKET ROTATION 90° + 90°
	CONTROLS Electric
	TURRET ROTATION 700°
	GVW 10 ton

STANDARD ACCESSORIES

[a] AUTOMATIC STABILIZATION

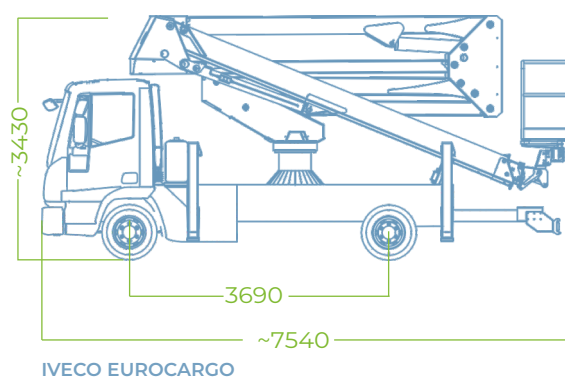
The **SPEED** function is a new solution present in Socage's Aerial Working Platforms on Chassis. It brings great advantages including increasing safety and facilitating the correct use of the necessary stabilization maneuver to start working. With a single button, even from the basket, it allows to obtain stabilization in a safe, simple and fast way, quickly overcoming the irregularities of the ground.

DATA SHEET

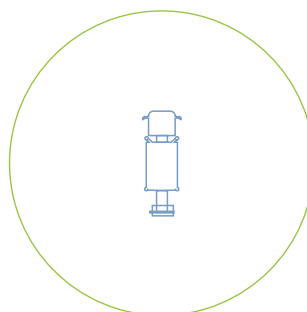
- **SPEED automatic closing**
- **SPEED automatic stabilization from the basket and from the ground**
- Proportional electrohydraulic controls with regulation of the speed of all movements
- Double or triple working area depending on the installation
- Electronic safe system CAN BUS
- Engine start/stop from the basket
- Heat exchanger
- 4 outrigger plates
- Socket 230V
- Magnetic roto-lamp on the vehicle cabin
- Cataphoresis treatment with powder coating
- Aerial part centering light on the basket
- Tool trunk
- Under-run
- 150 mm aluminum side rails
- LED rear bumper lights
- LED rotating beacon on truck cab

SAFETY DATA

- Emergency button
- Emergency manual hand pump
- Cross-check of open stabilizers
- Multi-axial device for visual control of frame stabilization
- Intelligent cabin anti-collision sensor
- Load limiter in the basket
- Moment limiting device with double security
- Chassis flatness sensor
- Flanged block valves
- Differentiated filtering hydraulic system with high efficiency filters both on the delivery lines and on the return lines
- Automatic basket leveling
- Automatic PTO deactivation
- Warning horn from the basket
- SSW Socage Safe Workplace safety lights on the aerial part



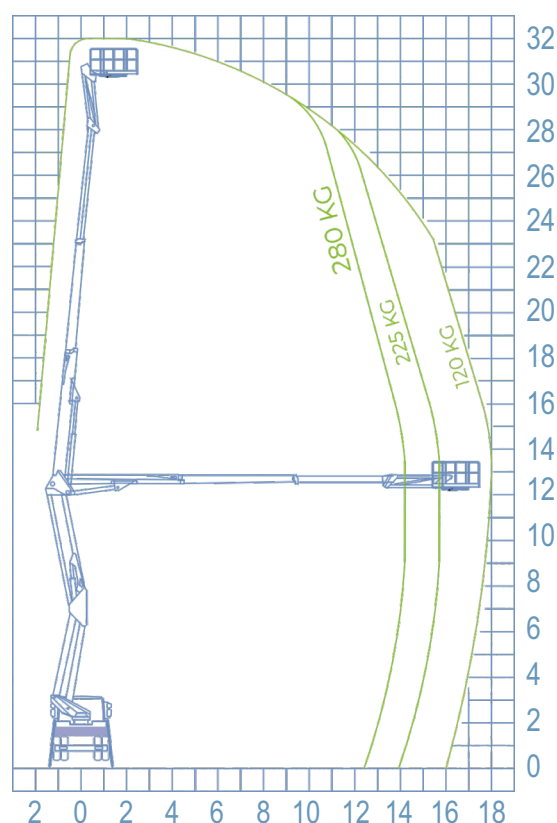
MAXIMUM AREA





WORKING DIAGRAM

MAXIMUM AREA



INFO

	OUTRIGGERS H+H
	WORKING HEIGHT 32,00 m
	BASKET HEIGHT 30,00 m
	MAX OUTREACH 18,00 m
	BASKET LOAD CAPACITY 280 kg
	BASKET SIZE 1800x700x1100 mm
	BASKET ROTATION 90° + 90°
	CONTROLS Electric
	TURRET ROTATION 700°
	GVW 12 ton

STANDARD ACCESSORIES

[a] AUTOMATIC STABILIZATION

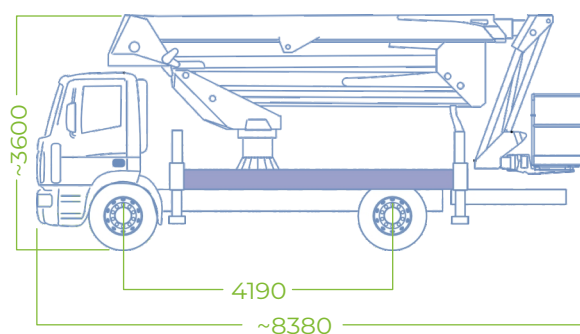
The **SPEED** function is a new solution present in Söcage's Aerial Working Platforms on Chassis. It brings great advantages including increasing safety and facilitating the correct use of the necessary stabilization maneuver to start working. With a single button, even from the basket, it allows to obtain stabilization in a safe, simple and fast way, quickly overcoming the irregularities of the ground.

DATA SHEET

- **SPEED automatic closing**
- **SPEED automatic stabilization from the basket and from the ground**
- Proportional electrohydraulic controls with regulation of the speed of all movements
- Double or triple working area depending on the installation
- Articulated final jib
- Electronic safe system CAN BUS
- Engine start/stop from the basket
- Heat exchanger
- 4 outrigger plates
- Socket 230V
- Magnetic roto-lamp on the vehicle cabin
- Cataphoresis treatment with powder coating
- Aerial part centering light on the basket
- Tool trunk
- Under-run
- 150 mm aluminum side rails
- LED rear bumper lights
- LED rotating beacon on truck cab

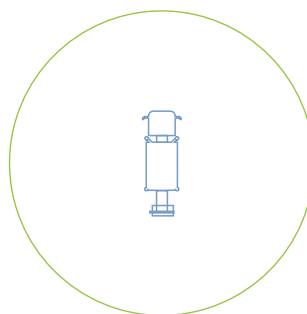
SAFETY DATA

- Emergency button
- Emergency manual hand pump
- Cross-check of open stabilizers
- Multi-axial device for visual control of frame stabilization
- Intelligent cabin anti-collision sensor
- Load limiter in the basket
- Moment limiting device with double security
- Chassis flatness sensor
- Flanged block valves
- Differentiated filtering hydraulic system with high efficiency filters both on the delivery lines and on the return lines
- Automatic basket leveling
- Automatic PTO deactivation
- Warning horn from the basket
- SSW Söcage Safe Workplace safety lights on the aerial part



IVECO EUROCARGO

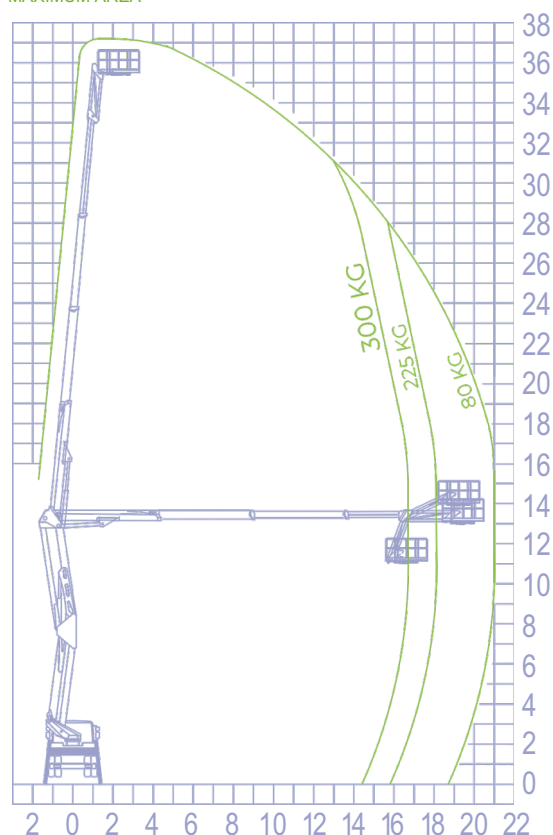
MAXIMUM AREA





WORKING DIAGRAM

MAXIMUM AREA



OUTRIGGERS
H+H



WORKING HEIGHT
37,30 m



BASKET HEIGHT
35,30 m



MAX OUTREACH
21,00 m



BASKET LOAD CAPACITY
300 kg



BASKET SIZE
2000x800x1100 mm



BASKET ROTATION
90° + 90°



CONTROLS
Electric



TURRET ROTATION
700°



GVW
18 ton

STANDARD ACCESSORIES

[a] AUTOMATIC STABILIZATION

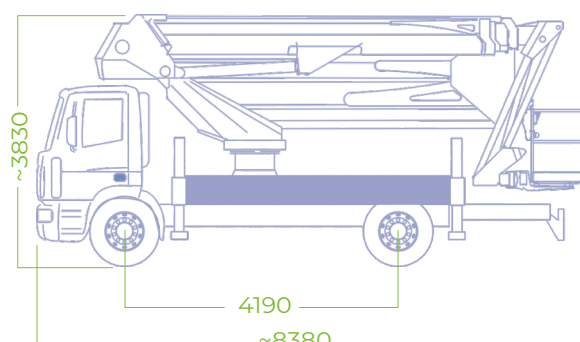
The **SPEED** function is a new solution present in Socage's Aerial Working Platforms on Chassis. It brings great advantages including increasing safety and facilitating the correct use of the necessary stabilization maneuver to start working. With a single button, even from the basket, it allows to obtain stabilization in a safe, simple and fast way, quickly overcoming the irregularities of the ground.

DATA SHEET

- **SPEED automatic closing**
- **SPEED automatic stabilization from the basket and from the ground**
- Proportional electrohydraulic controls with regulation of the speed of all movements
- Double or triple working area depending on the installation
- Articulated final jib
- Electronic safe system CAN BUS
- Engine start/stop from the basket
- Heat exchanger
- 4 outrigger plates
- Socket 230V
- Magnetic roto-lamp on the vehicle cabin
- Cataphoresis treatment with powder coating
- Aerial part centering light on the basket
- Tool trunk
- Under-run
- 150 mm aluminum side rails
- LED rear bumper lights
- LED rotating beacon on truck cab

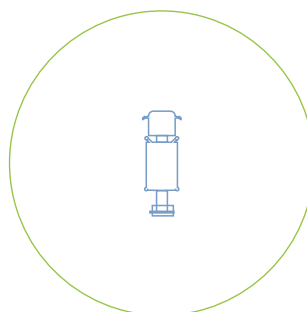
SAFETY DATA

- Emergency button
- Emergency manual hand pump
- Cross-check of open stabilizers
- Multi-axial device for visual control of frame stabilization
- Intelligent cabin anti-collision sensor
- Load limiter in the basket
- Moment limiting device with double security
- Chassis flatness sensor
- Flanged block valves
- Differentiated filtering hydraulic system with high efficiency filters both on the delivery lines and on the return lines
- Automatic basket leveling
- Automatic PTO deactivation
- Warning horn from the basket
- SSW Socage Safe Workplace safety lights on the aerial part



IVECO EURO CARGO

MAXIMUM
AREA



TELESCOPIC

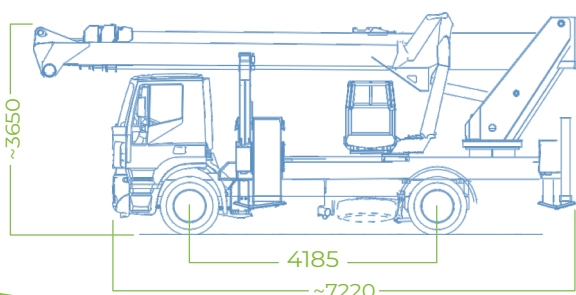
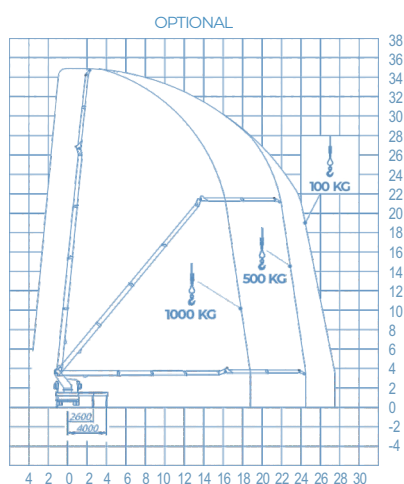
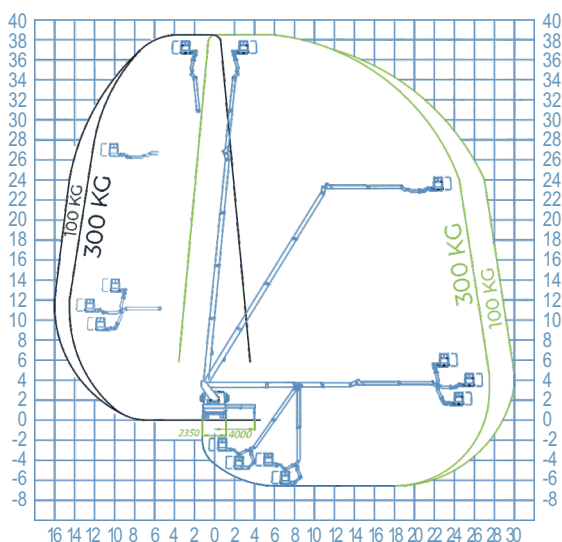
>3,5TN





WORKING DIAGRAM

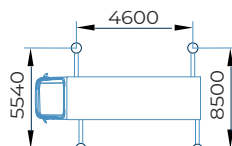
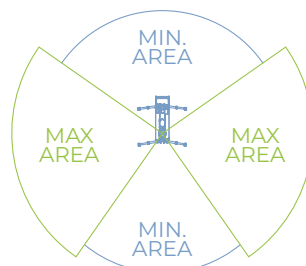
- WORKING AREA WITH IN-SHAPE STABILIZATION
- MAXIMUM AREA



IVECO EUROCARGO

INFO

- OUTRIGGERS
HE+HE
- WORKING HEIGHT
38,50 m
- BASKET HEIGHT
36,50 m
- MAX OUTREACH
30,00 m
- BASKET LOAD CAPACITY
300 kg
- BASKET SIZE
2200/3200x700x1100 mm
- BASKET ROTATION
180° + 180°
- CONTROLS
Electric
- TURRET ROTATION
700°
- GVW
18 ton



DIMENSIONS
STABILISERS
WITH MAX AREA

STANDARD ACCESSORIES

DATA SHEET

- SOCAGE convertible basket possibility (Eternit)
- 2nd Jib 180° manual rotation
- Possibility of winch on removable JIB
- Automatic stabilization
- Partially stabilized working areas
- Automatic closing
- Basket control station with console on Socage design including joystick and 7 "LCD display with real-time information
- Intercom with headphones for basket-ground communication
- Main and auxiliary motor start/stop control from the basket
- Multifunction radio remote control for emergency control of the aerial part from the ground and stabilization
- 2 fixed roto-lamp on the vehicle cabin
- Socket 230V/400V
- Heat exchanger on the hydraulic system
- 2 folding sides, 2 fixed (h 150 mm)
- 4 outrigger plates
- Anti-corrosion treatment on unpainted components

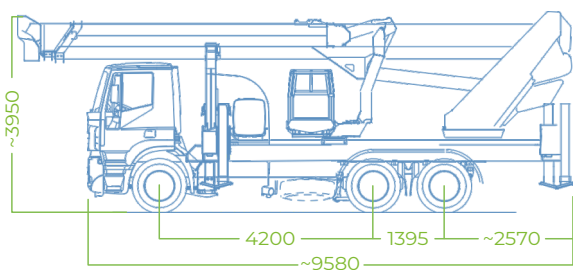
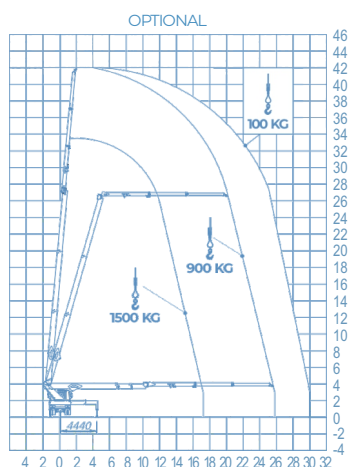
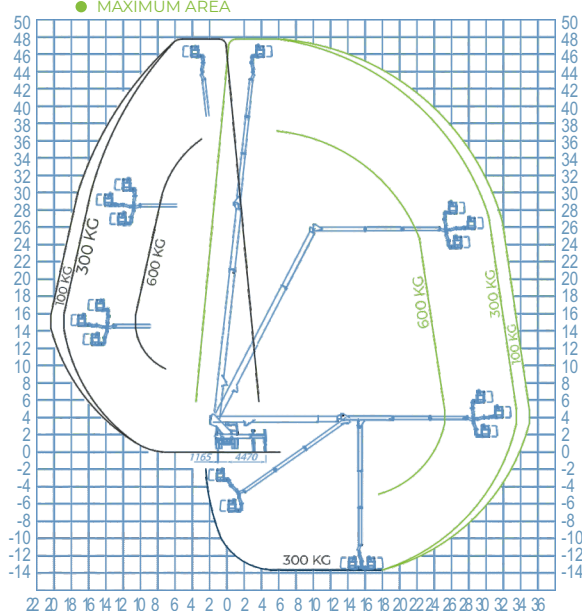
SAFETY DATA

- Emergency button
- Emergency manual hand pump
- Automatic PTO deactivation
- Cross-check of open stabilizers
- Anemometer
- Load limiter in the basket
- Moment limiter with double safety and control of correct operation
- Multi axial device for visual control of frame stabilization
- Emergency descent with electric pump (in the absence of the auxiliary motor)
- Rotation brake of the turret with automatic insertion
- Hydraulic system with differentiated filtering with high efficiency filters both on the delivery lines and on the return lines
- Multifunction radio control for emergency control
- Automatism for rotation lock with extension of the stabilizers on one side only
- Chassis flatness sensor
- Flanged block valves



WORKING DIAGRAM

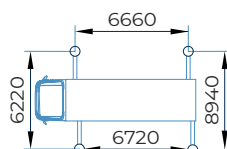
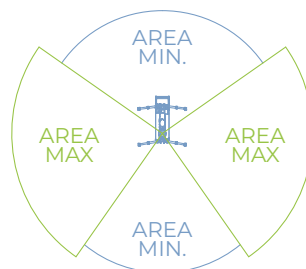
- WORKING AREA WITH IN-SHAPE STABILIZATION
- MAXIMUM AREA



IVECO S-WAY

INFO

- OUTRIGGERS
HE+HE
- WORKING HEIGHT
47,70 m
- BASKET HEIGHT
45,70 m
- MAX OUTREACH
35,00 m
- BASKET LOAD CAPACITY
600 kg
- BASKET SIZE
2200/3600x900x1100 mm
- BASKET ROTATION
180° + 180°
- CONTROLS
Electric
- TURRET ROTATION
700°
- GVW
26 ton



DIMENSIONS
STABILISERS
WITH MAX AREA

STANDARD ACCESSORIES

DATA SHEET

- SOCAGE convertible basket possibility (Eternit)
- 2nd Jib 180° manual rotation
- Possibility of winch on removable JIB
- Automatic stabilization
- Partially stabilized working areas
- Automatic closing
- Basket control station with console on Socage design including joystick and 7" LCD display with real-time information
- Intercom with headphones for basket-ground communication
- Main and auxiliary motor start/stop control from the basket
- Multifunction radio remote control for emergency control of the aerial part from the ground and stabilization
- 2 fixed roto-lamp on the vehicle cabin
- Socket 230V/400V
- Heat exchanger on the hydraulic system
- 2 folding sides, 2 fixed (h 150 mm)
- 4 plates to stand to the ground
- Anti-corrosion treatment on unpainted components

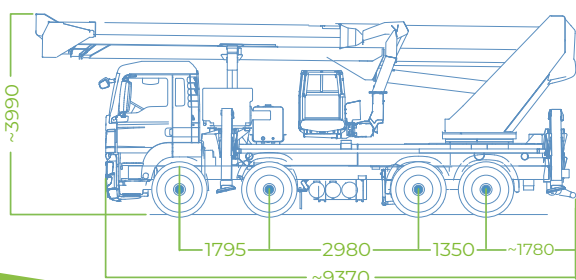
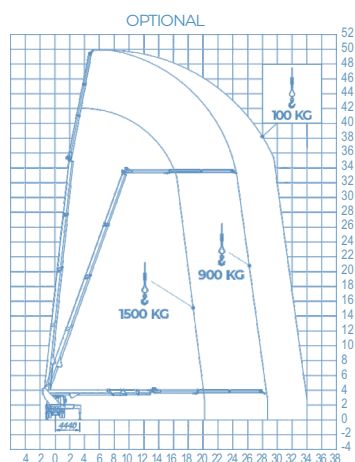
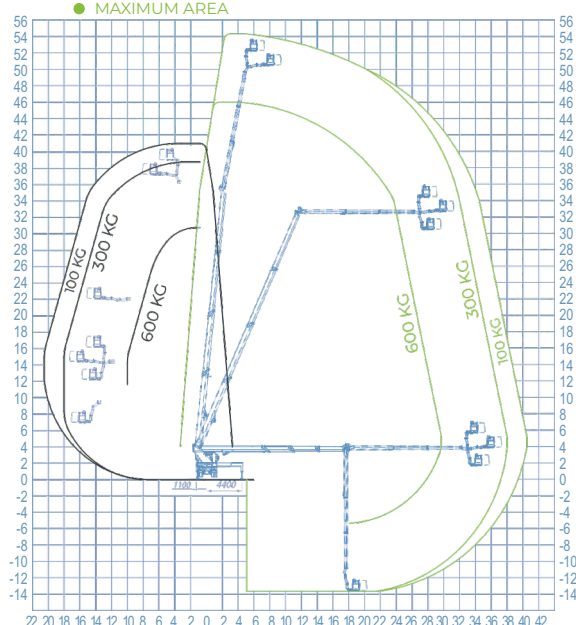
SAFETY DATA

- Emergency button
- Emergency manual hand pump
- Automatic PTO deactivation
- Cross-check of open stabilizers
- Anemometer
- Load limiter in the basket
- Moment limiter with double safety and control of correct operation
- Multi axial device for visual control of frame stabilization
- Emergency descent with electric pump (in the absence of the auxiliary motor)
- Rotation brake of the turret with automatic insertion
- Hydraulic system with differentiated filtering with high efficiency filters both on the delivery lines and on the return lines
- Multifunction radio control for emergency control
- Automatism for rotation lock with extension of the stabilizers on one side only
- Chassis flatness sensor
- Flanged block valves



WORKING DIAGRAM

- WORKING AREA WITH IN-SHAPE STABILIZATION
- MAXIMUM AREA



MAN TGS

INFO



OUTRIGGERS
HE+HE



WORKING HEIGHT
54,30 m



BASKET HEIGHT
52,30 m



MAX OUTREACH
40,00 m



BASKET LOAD CAPACITY
600 kg



BASKET SIZE
2300/3600x900x1100 mm



BASKET ROTATION
180° + 180°



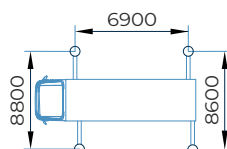
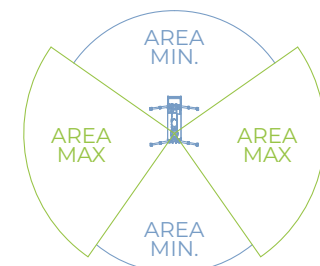
CONTROLS
Electric



TURRET ROTATION
700°



GVW
26/32 ton



DIMENSIONS
STABILISERS
WITH MAX AREA

STANDARD ACCESSORIES



DATA SHEET

- SOCAGE convertible basket possibility (Eternit)
- 2nd Jib 180° manual rotation
- Possibility of winch on removable JIB
- Automatic stabilization
- Partially stabilized working areas
- Automatic closing
- Basket control station with console on Socage design including joystick and 7 "LCD display with real-time information
- Intercom with headphones for basket-ground communication
- Main and auxiliary motor start/stop control from the basket
- Multifunction radio remote control for emergency control of the aerial part from the ground and stabilization
- 2 fixed roto-lamp on the vehicle cabin
- Socket 230V/400V
- Heat exchanger on the hydraulic system
- 2 folding sides, 2 fixed (h 150 mm)
- 4 outrigger plates
- Anti-corrosion treatment on unpainted components



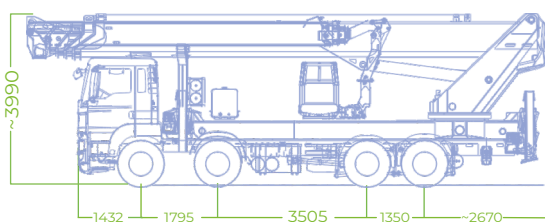
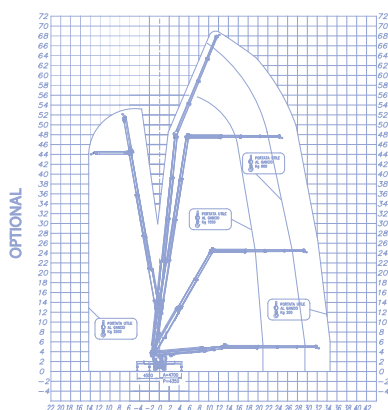
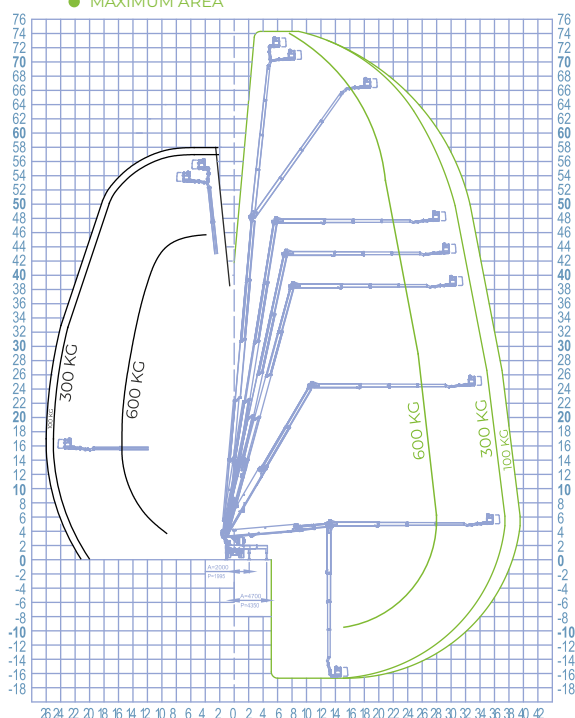
SAFETY DATA

- Emergency button
- Emergency manual hand pump
- Automatic PTO deactivation
- Cross-check of open stabilizers
- Anemometer
- Load limiter in the basket
- Moment limiter with double safety and control of correct operation
- Multi axial device for visual control of frame stabilization
- Emergency descent with electric pump (in the absence of the auxiliary motor)
- Rotation brake of the turret with automatic insertion
- Hydraulic system with differentiated filtering with high efficiency filters both on the delivery lines and on the return lines
- Multifunction radio control for emergency control
- Automatism for rotation lock with extension of the stabilizers on one side only
- Chassis flatness sensor
- Flanged block valves



WORKING DIAGRAM

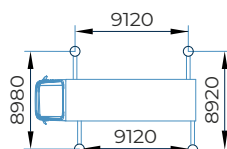
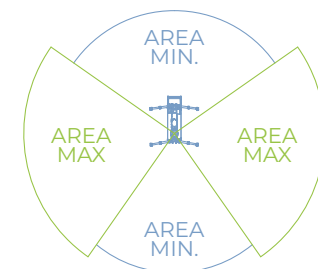
- WORKING AREA WITH IN-SHAPE STABILIZATION
- MAXIMUM AREA



MAN TGM 35.470 - 8X2-6 - PASSO 5300

INFO

- OUTRIGGERS
HE+HE
- WORKING HEIGHT
74,50 m
- BASKET HEIGHT
72,50 m
- MAX OUTREACH
39,50 m
- BASKET LOAD CAPACITY
600 kg
- BASKET SIZE
2300/3600x900x1100 mm
- BASKET ROTATION
180° + 180°
- CONTROLS
Electric
- TURRET ROTATION
700°
- GVW
32 ton



DIMENSIONS
STABILISERS
WITH MAX AREA

STANDARD ACCESSORIES

DATA SHEET

- SOCAGE convertible basket possibility (Eternit)
- 2nd Jib 180° manual rotation
- Possibility of winch on removable JIB
- Automatic stabilization
- Partially stabilized working areas
- Automatic closing
- Basket control station with console on Socage design including joystick and 7 "LCD display with real-time information
- Intercom with headphones for basket-ground communication
- Main and auxiliary motor start/stop control from the basket
- Multifunction radio remote control for emergency control of the aerial part from the ground and stabilization
- 2 fixed roto-lamp on the vehicle cabin
- Socket 230V/400V
- Heat exchanger on the hydraulic system
- 2 folding sides, 2 fixed (h 150 mm)
- 4 outrigger plates
- Anti-corrosion treatment on unpainted components

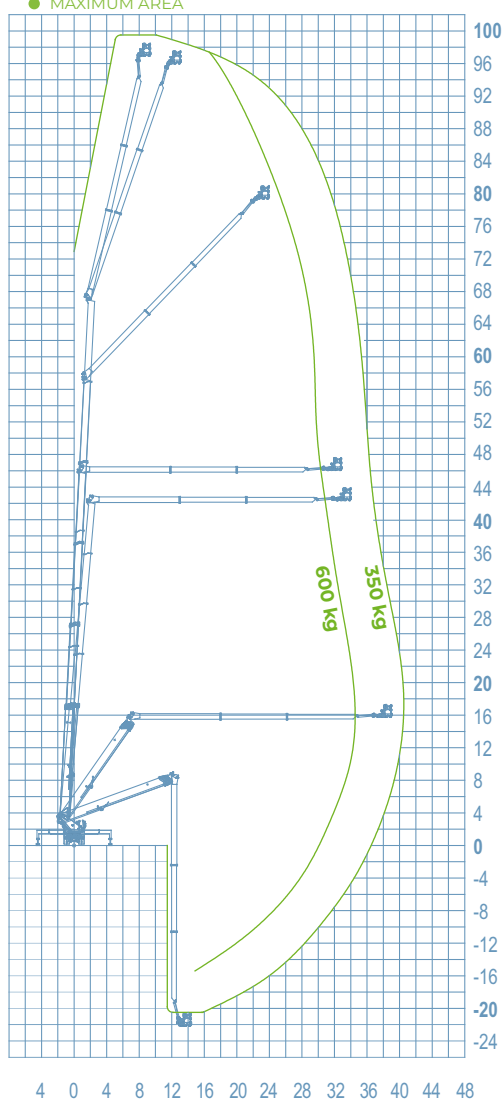
SAFETY DATA

- Emergency button
- Emergency manual hand pump
- Automatic PTO deactivation
- Cross-check of open stabilizers
- Anemometer
- Load limiter in the basket
- Moment limiter with double safety and control of correct operation
- Multi axial device for visual control of frame stabilization
- Emergency descent with electric pump (in the absence of the auxiliary motor)
- Rotation brake of the turret with automatic insertion
- Hydraulic system with differentiated filtering with high efficiency filters both on the delivery lines and on the return lines
- Multifunction radio control for emergency control
- Automatism for rotation lock with extension of the stabilizers on one side only
- Chassis flatness sensor
- Flanged block valves



WORKING DIAGRAM

- WORKING AREA WITH IN-SHAPE STABILIZATION
- MAXIMUM AREA



OUTRIGGERS
HE+HE



WORKING HEIGHT
99,50 m



BASKET HEIGHT
97,50 m



MAX OUTREACH
40,50 m (350 kg)



BASKET LOAD CAPACITY
600 kg



BASKET SIZE
2300/3600x900x1100 mm



BASKET ROTATION
360°



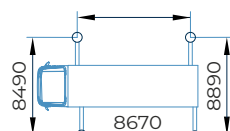
CONTROLS
Electric



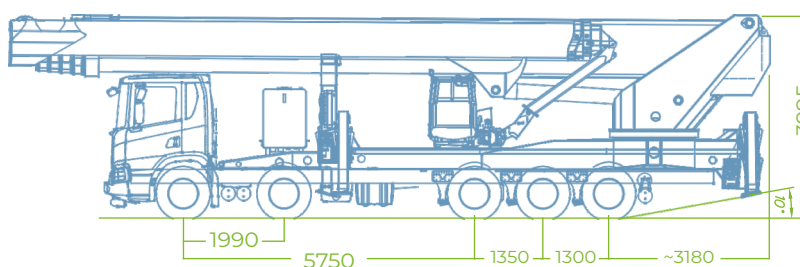
TURRET ROTATION
700°



GVW
53 ton



DIMENSIONS
STABILISERS
WITH MAX AREA



SCANIA P500

INFO

STANDARD ACCESSORIES



DATA SHEET

- SOCAGE convertible basket possibility (Eternit)
- 2nd Jib 180° manual rotation
- Possibility of winch on removable JIB
- Automatic stabilization
- Partially stabilized working areas
- Automatic closing
- Basket control station with console on Socage design including joystick and 7 "LCD display with real-time information
- Intercom with headphones for basket-ground communication
- Main and auxiliary motor start/stop control from the basket
- Multifunction radio remote control for emergency control of the aerial part from the ground and stabilization
- 2 fixed roto-lamp on the vehicle cabin
- Socket 230V/400V
- Heat exchanger on the hydraulic system
- 2 folding sides, 2 fixed (h 150 mm)
- 4 outrigger plates
- Anti-corrosion treatment on unpainted components



SAFETY DATA

- Emergency button
- Emergency manual hand pump
- Automatic PTO deactivation
- Cross-check of open stabilizers
- Anemometer
- Load limiter in the basket
- Moment limiter with double safety and control of correct operation
- Multi axial device for visual control of frame stabilization
- Emergency descent with electric pump (in the absence of the auxiliary motor)
- Rotation brake of the turret with automatic insertion
- Hydraulic system with differentiated filtering with high efficiency filters both on the delivery lines and on the return lines
- Multifunction radio control for emergency control
- Automatism for rotation lock with extension of the stabilizers on one side only
- Chassis flatness sensor
- Flanged block valves



SOCAGE, AERIAL PLATFORM CONSTRUCTOR ALL OVER THE WORLD



Socage, based in Modena, Italy, produces and sells truck mounted Aerial Working Platforms all over the world. With more than 40 years of experience, Socage is among the top experienced companies in the field.

Our products are of high quality and technologically advanced. Most notably, we stand out in the market for our reliability, ease of use, and performance.



forSte.it



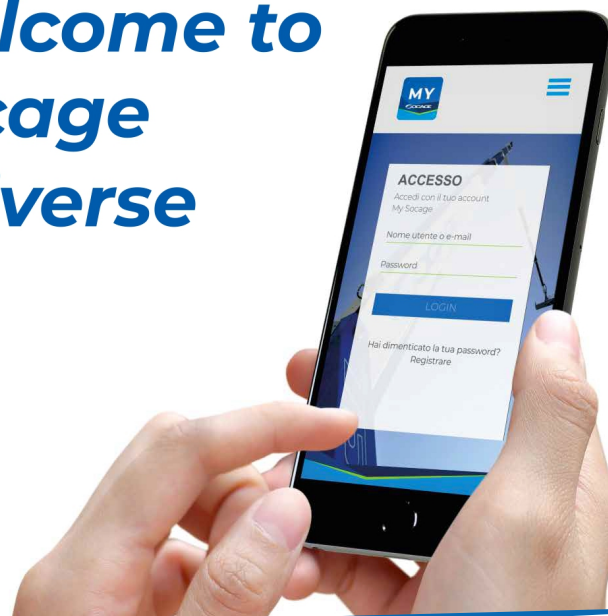
MY SOCAGE

From your smartphone, tablet or pc via My Socage you can:

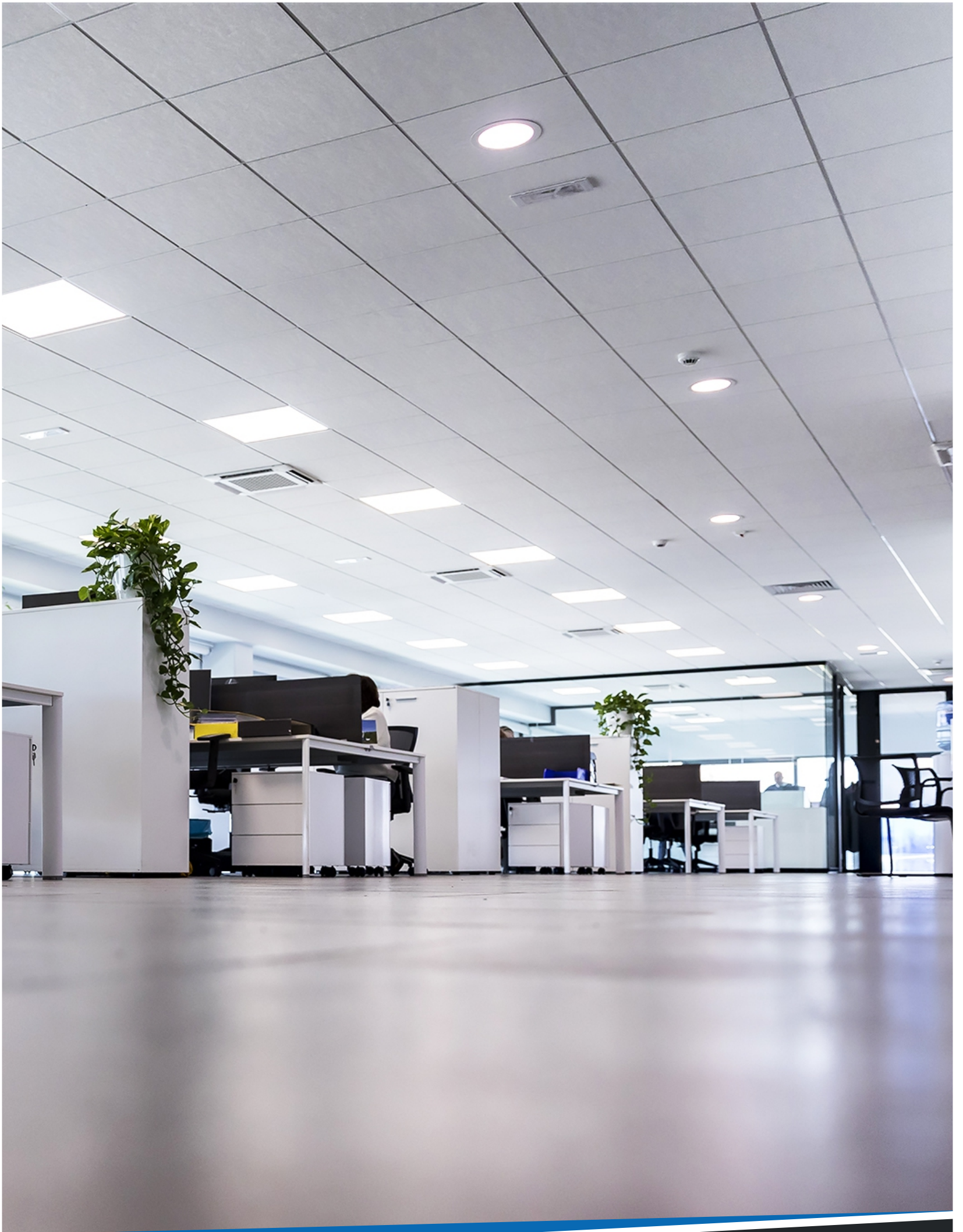
- Connect your platforms to Socage's software
- Find spare parts quickly and easily
- Request remote diagnosis via Socage Connect
- Manage the working hours of your platforms

My Socage connects your platforms with what matters the most to you.

Welcome to Socage Universe







socageworld.com



HQ - Via della Chimica 23, 41012 Carpi (MO) - (Italia)
Tel. +39 059 912 1211 | E-Mail info@socage.it