

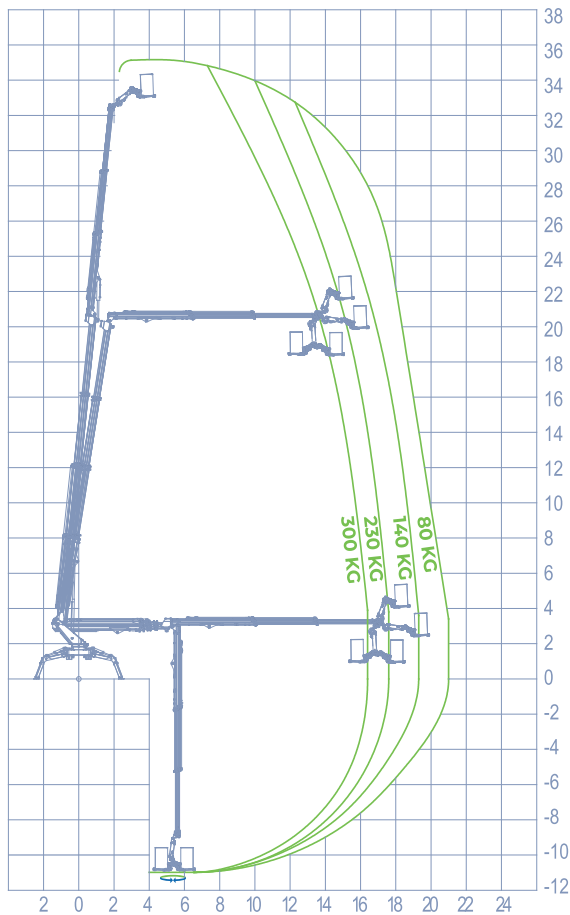


STANDARD ACCESSORIES

- Automatic closing
- Automatic opening of the aerial part
- Automatic stabilization
- Hydraulically extendable basket
- SSW: LED safety lights
- Electric hour-counter
- Manual hand pump
- 230V electric socket in the basket
- Multifunction radio control
- Auxiliary electric pump 380V-50Hz
- Flanged holding valves
- Bi-energy (Diesel engine + Electric motor)
- Multi-position stabilization area
- Under-bridge working mode
- Pre-installation for optional winch of 500kg

SERIES HYBRID MOTORE DIESEL MOTORE ELETTRICO

WORKING DIAGRAM



INFO

- OUTRIGGERS**
Z+Z
- WORKING HEIGHT**
35,00 m
- NEGATIVE WORK**
-11,00 m
- BASKET HEIGHT**
33,00 m
- MAX OUTREACH**
21,00 m
- BASKET LOAD CAPACITY**
300 kg
- BASKET SIZE**
1800 X 700 X 1100 mm
1200 X 700 X 1100 mm
- CONTROLS**
Electro-Hydraulic
- TURRET ROTATION**
200°+200°
- GVW**
8,2 ton
- SIZE**
4750 x 5200 mm
3000 x 6700 mm
- BASKET ROTATION**
90° + 90°
- LIFTING HOOK**
500 kg

SIZE

