



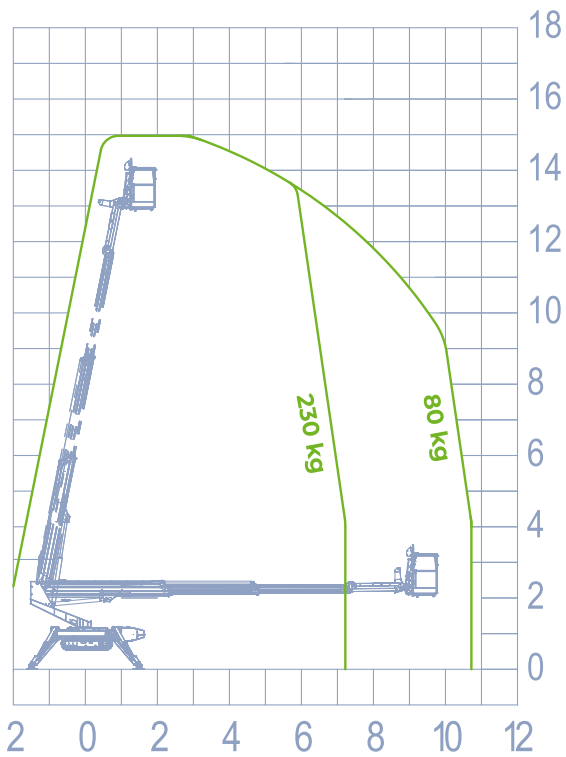
### STANDARD ACCESSORIES

- Automatic closing
- Automatic stabilization
- Quick release of the basket
- Lifting Hook Support 230kg
- SSW: LED safety lights
- LED travel light
- Booms realized in profiles advanced high tensile steel
- Jib lifting during travel
- Cataphoresis treatment
- Hydraulically extendable tracks
- White non-marking tracks
- Lifting hook on stabilisers
- Extra-large outrigger plates
- Pre-installation for Raptor Stab. Optional
- Socage Connect
- Integrated charger + extra battery for radio control
- Multifunction hydraulic distributor
- Manual hand pump
- 230V electric socket in the basket
- Multifunction radio control
- Auxiliary electric pump 230V-50Hz
- Bi-energy (Diesel engine + Electric motor)
- Trailer transport + Raptor Trailer optional

**SERIES**  
**HYBRID**



### WORKING DIAGRAM



### INFO

- OUTRIGGERS**  
Z+Z
- WORKING HEIGHT**  
14,90 m
- BASKET HEIGHT**  
12,90 m
- MAX OUTREACH**  
10,70 m
- BASKET LOAD CAPACITY**  
230 kg
- BASKET SIZE**  
1400 X 700 X 1100 mm
- CONTROLS**  
Electro-Hydraulic
- TURRET ROTATION**  
190°+190°
- GVW**  
2,0 ton
- SIZE**  
3150 x 3000 mm
- BASKET ROTATION**  
60° + 60°
- LIFTING HOOK**  
230 kg

### SIZE

