



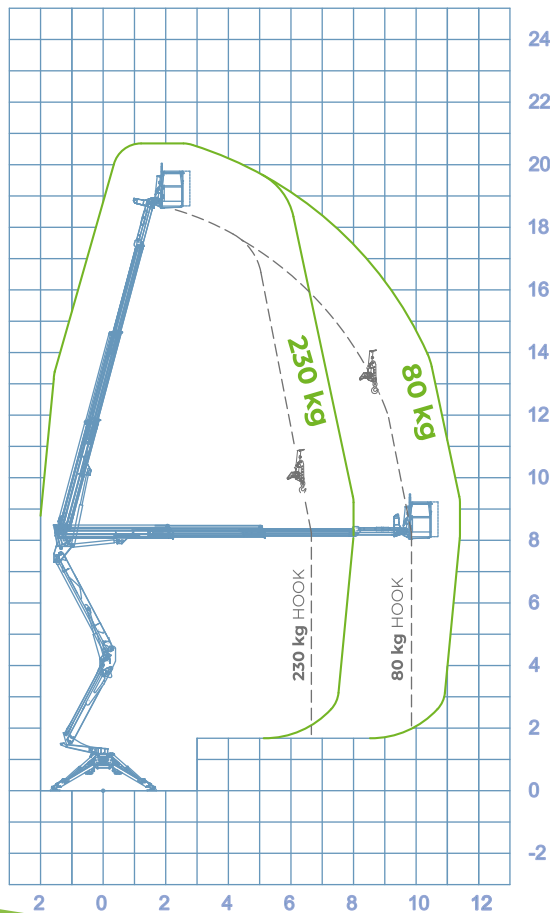
**STANDARD ACCESSORIES**

- Automatic closing
- Automatic stabilization
- Quick release of the basket
- Lifting Hook Support 230kg
- SSW: LED safety lights
- LED travel light
- Booms realized in profiles advanced high tensile steel
- Jib lifting during travel
- Cataphoresis treatment
- Hydraulically extendable tracks
- White non-marking tracks
- Lifting hook on stabilisers
- Extra-large outrigger plates
- Pre-installation for Raptor Stab. Optional
- Socage Connect
- Integrated charger + extra battery for radio control
- Multifunction hydraulic distributor
- Manual hand pump
- 230V electric socket in the basket
- Multifunction radio control
- Auxiliary electric pump 230V-50Hz
- 10kW 48V Lithium battery pack
- Trailer transport + Raptor Trailer optional

**SERIES ELECTRIC** **LITHIUM BATTERY PACK** **(240Ah)**  
100% ELECTRIC WITH SUPERIOR RANGE



**WORKING DIAGRAM**



**INFO**

- OUTRIGGERS**  
Z+Z
- WORKING HEIGHT**  
20,80 m
- BASKET HEIGHT**  
18,80 m
- MAX OUTREACH**  
11,30 m
- BASKET LOAD CAPACITY**  
230 kg
- BASKET SIZE**  
1400 X 700 X 1100 mm
- CONTROLS**  
Electro-Hydraulic
- TURRET ROTATION**  
190°+190°
- GVW**  
2,6 ton
- SIZE**  
3000 x 3150 mm  
3150 x 3450 mm
- BASKET ROTATION**  
60° + 60°
- LIFTING HOOK**  
230 kg
- BATTERY**  
44V - 10,12 kWh - 228Ah

**SIZE**

